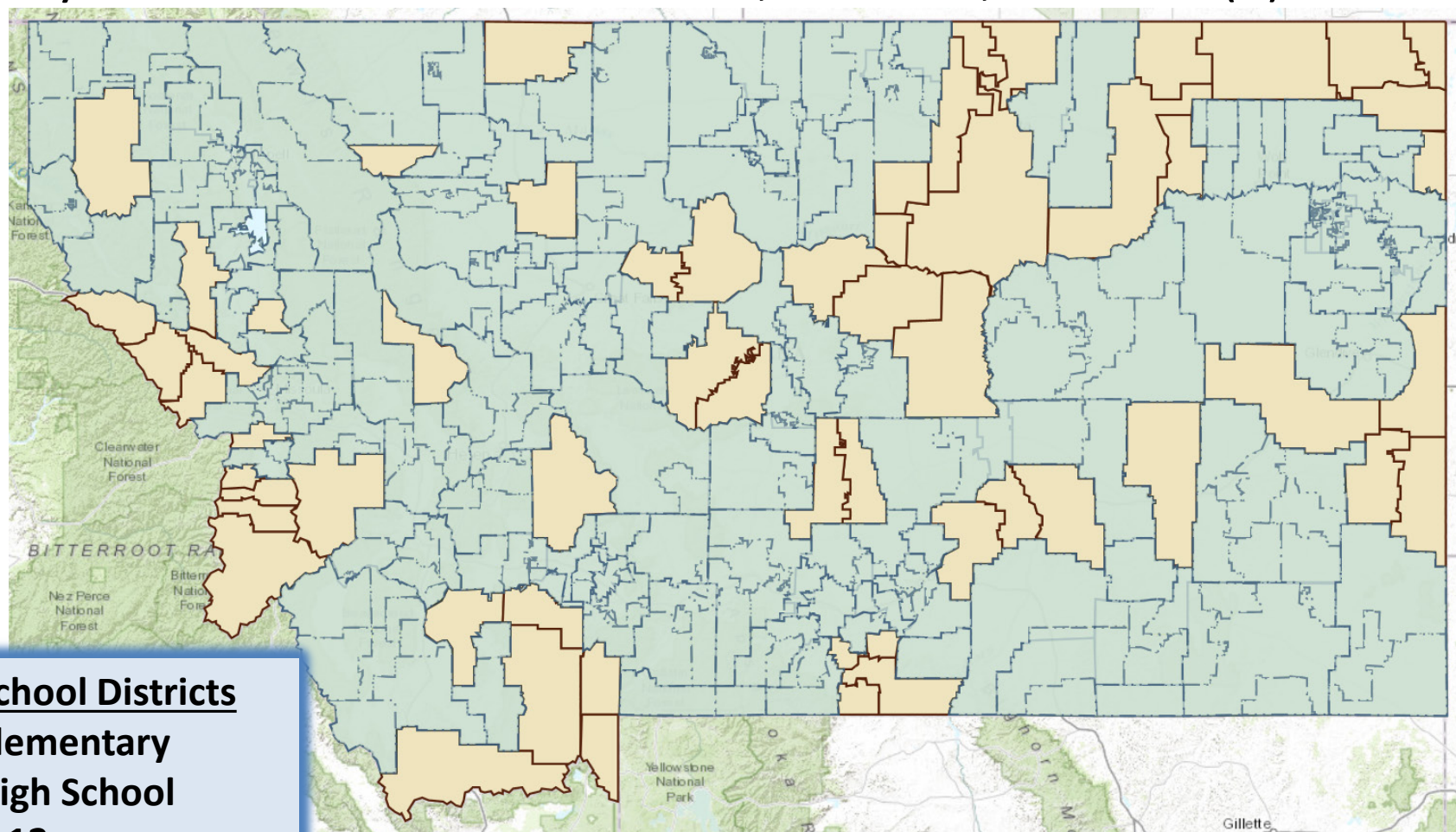


A world map with a light blue background and green landmasses. A small black rectangle highlights the state of Montana in North America. The map is labeled with the names of the continents: NORTH AMERICA, SOUTH AMERICA, AUSTRALIA, EUROPE, and AFRICA.

Montana K-12 Funding from 50,000'

Prepared for the School Funding Interim Commission
by Pad McCracken, LSD Research Analyst, Sept 2015

“[The Montana Legislature] shall fund and distribute in an equitable manner to the school districts the state's share of the cost of the basic elementary and secondary school system.” Montana Constitution, Article X, section 1(3)

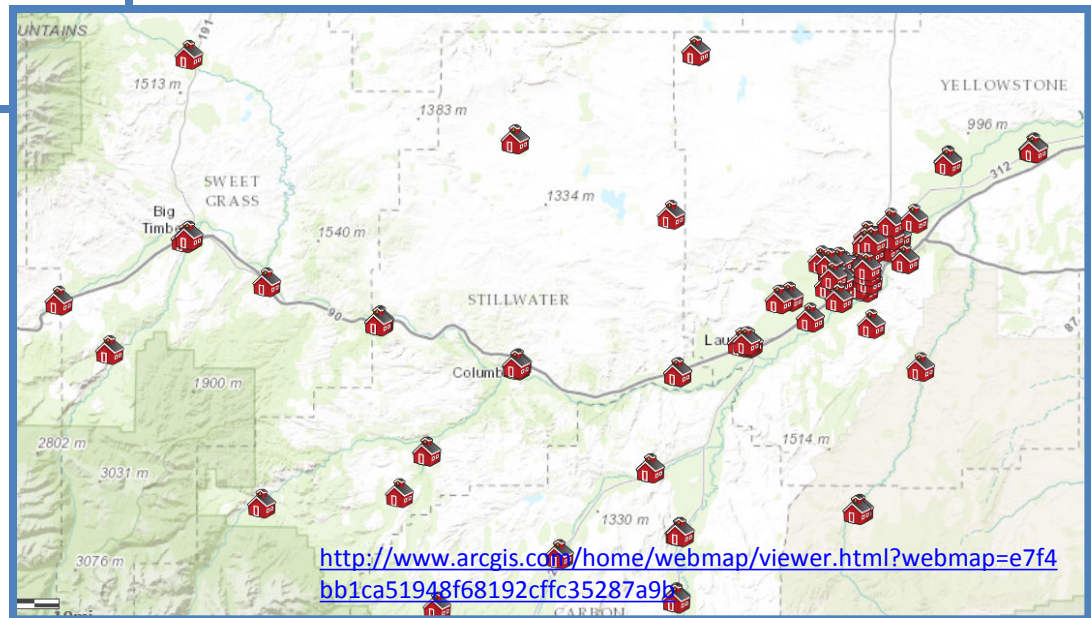
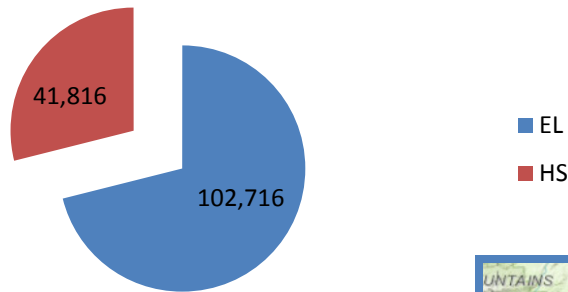


411 School Districts
246 Elementary
103 High School
57 K-12
5 Nonoperating

<http://www.arcgis.com/home/webmap/viewer.html?webmap=e7f4bb1ca51948f68192cffc35287a9b>

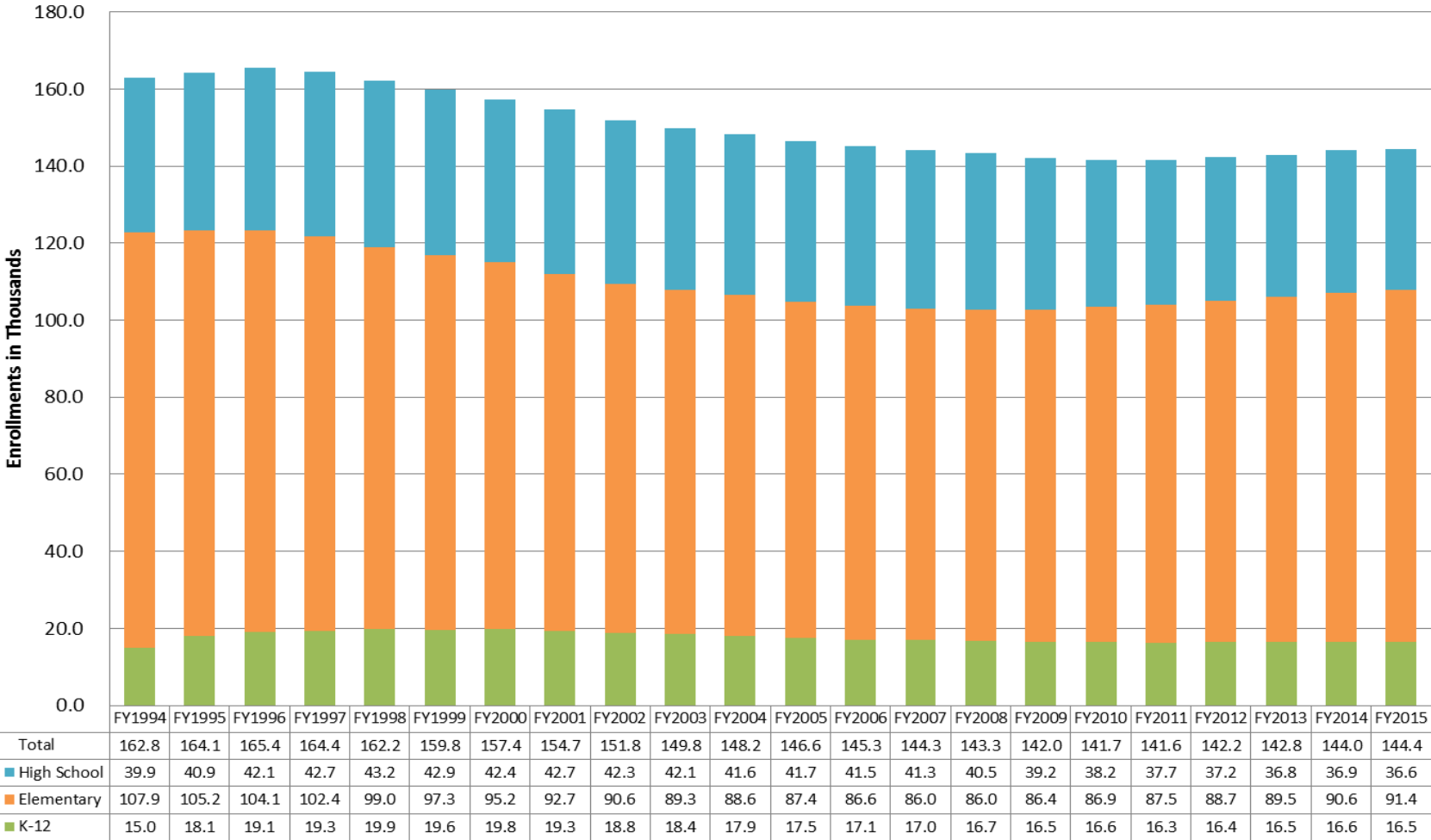
Montana school districts serve about 145,000 students in 824 schools and graduated 9,474 students in 2014.

**Total Enrollment of 144,532
for the 2014-2015 school year**



Enrollment peaked in the mid-1990s, but is growing again as of 2012.

Montana Student Enrollments K-12
(in thousands)

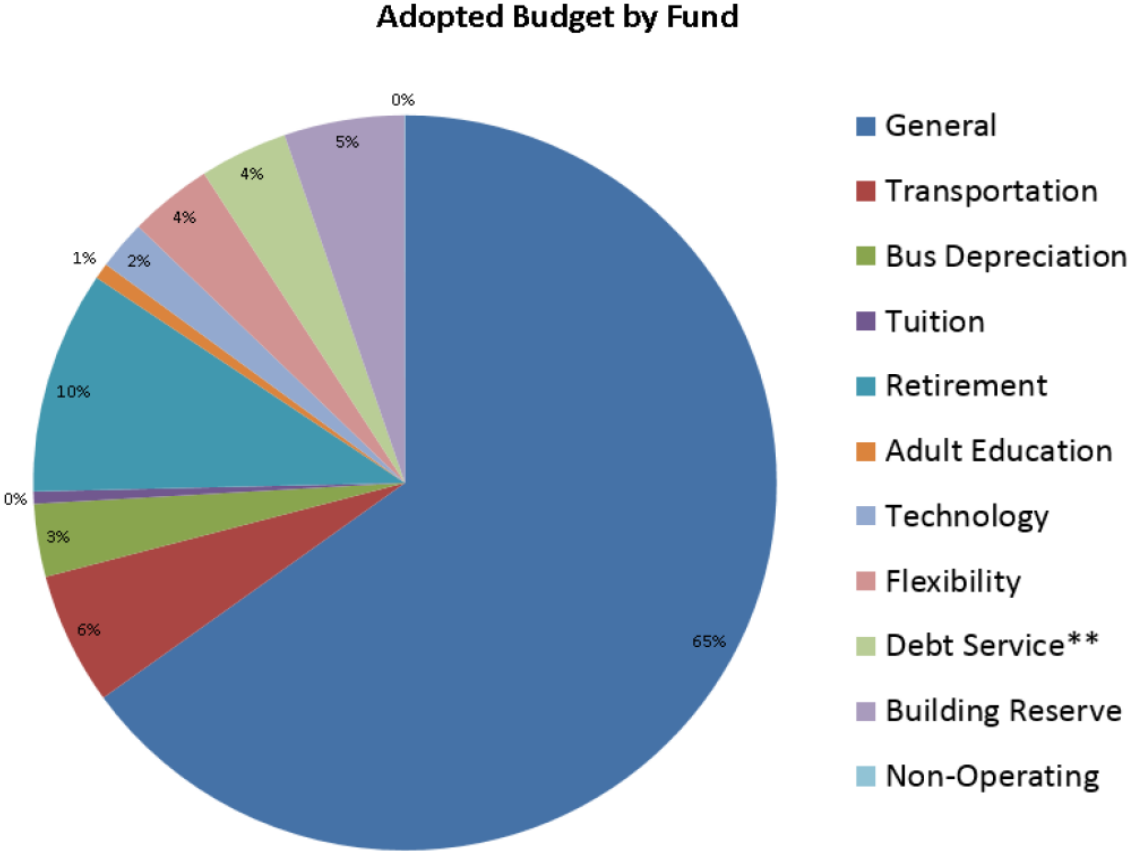


A district's finances are accounted for in over 20 different funds which are funded by varying blends of local, state, federal, and private dollars.



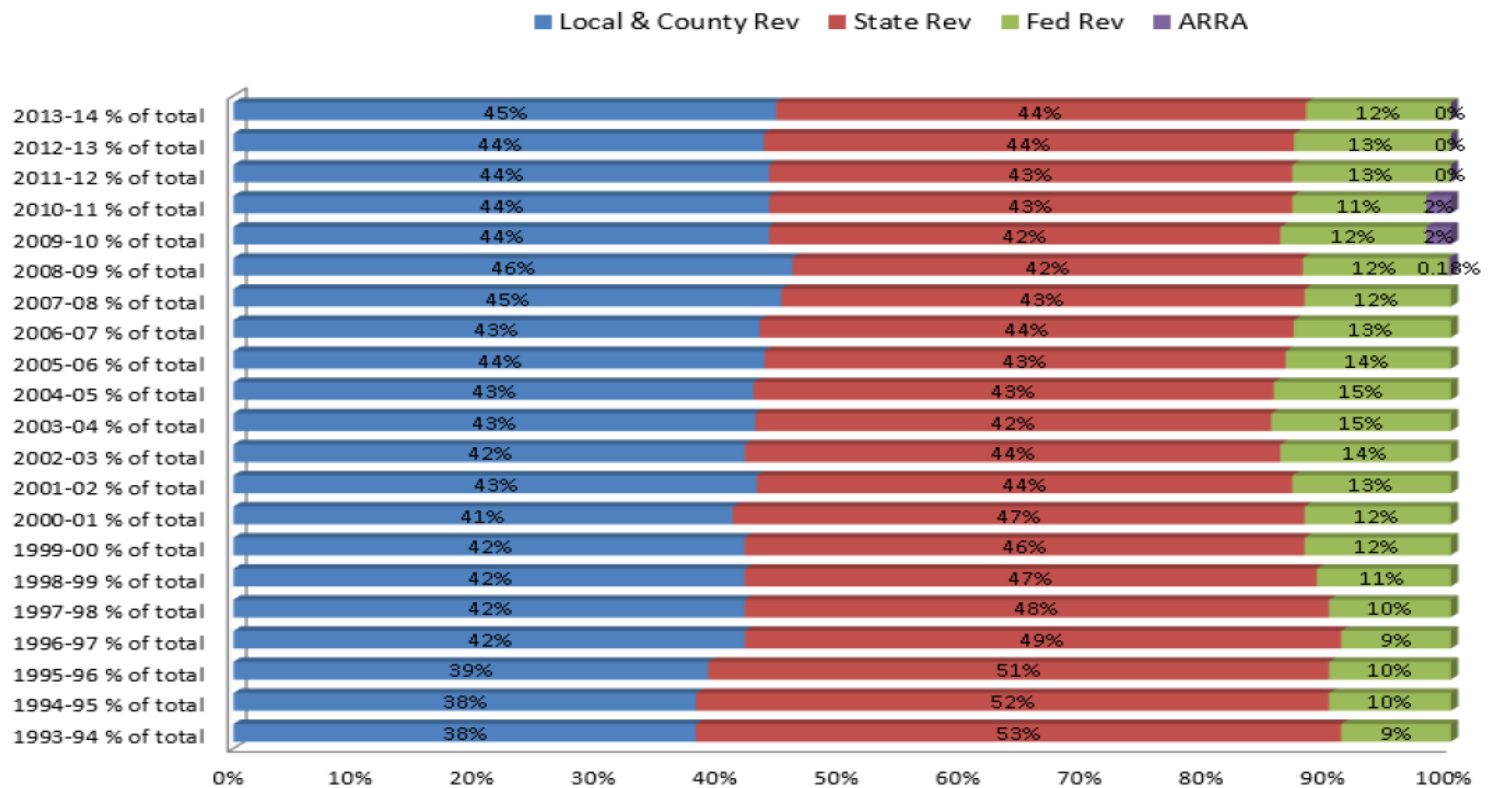
These district funds are either budgeted or non-budgeted. This pie chart shows the relative size of each of the budgeted funds.

Special Revenue Funds: Budgeted FY15



Statewide, the funding blend in ALL school funds has looked like this over the last 20 years

Local, State and Federal Shares



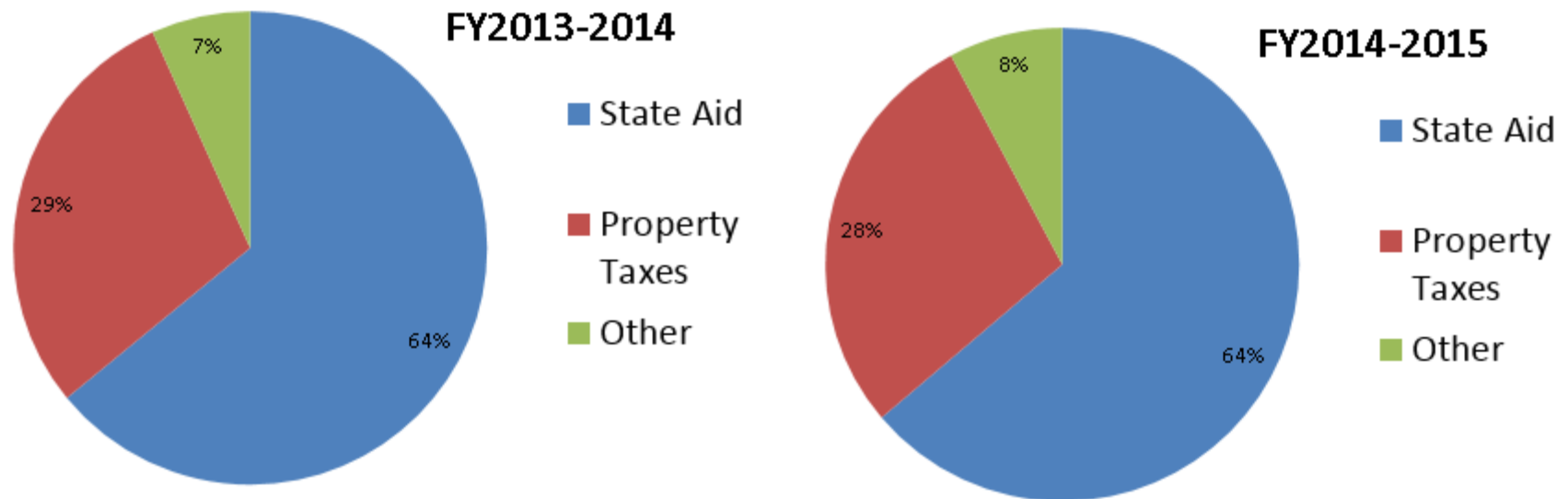
*ARRA does not include Revenue type General Fund SFSF (rev types 7800, 7810) this is included in State Revenue.

This chart shows revenues for **all** school funds

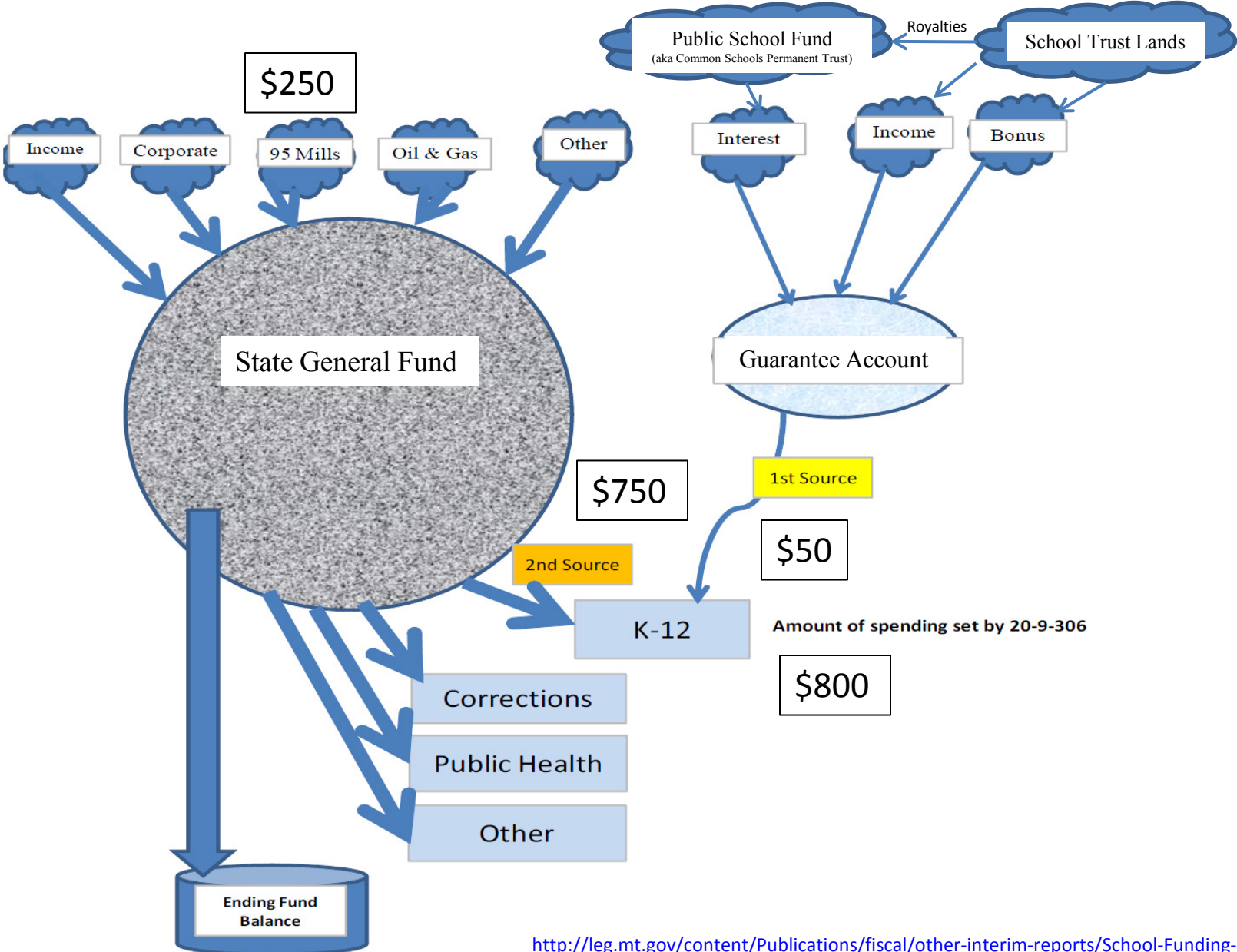


A school district's largest fund, for general operations, is called the general fund and is made up only of local and state dollars.

District General Fund Revenues



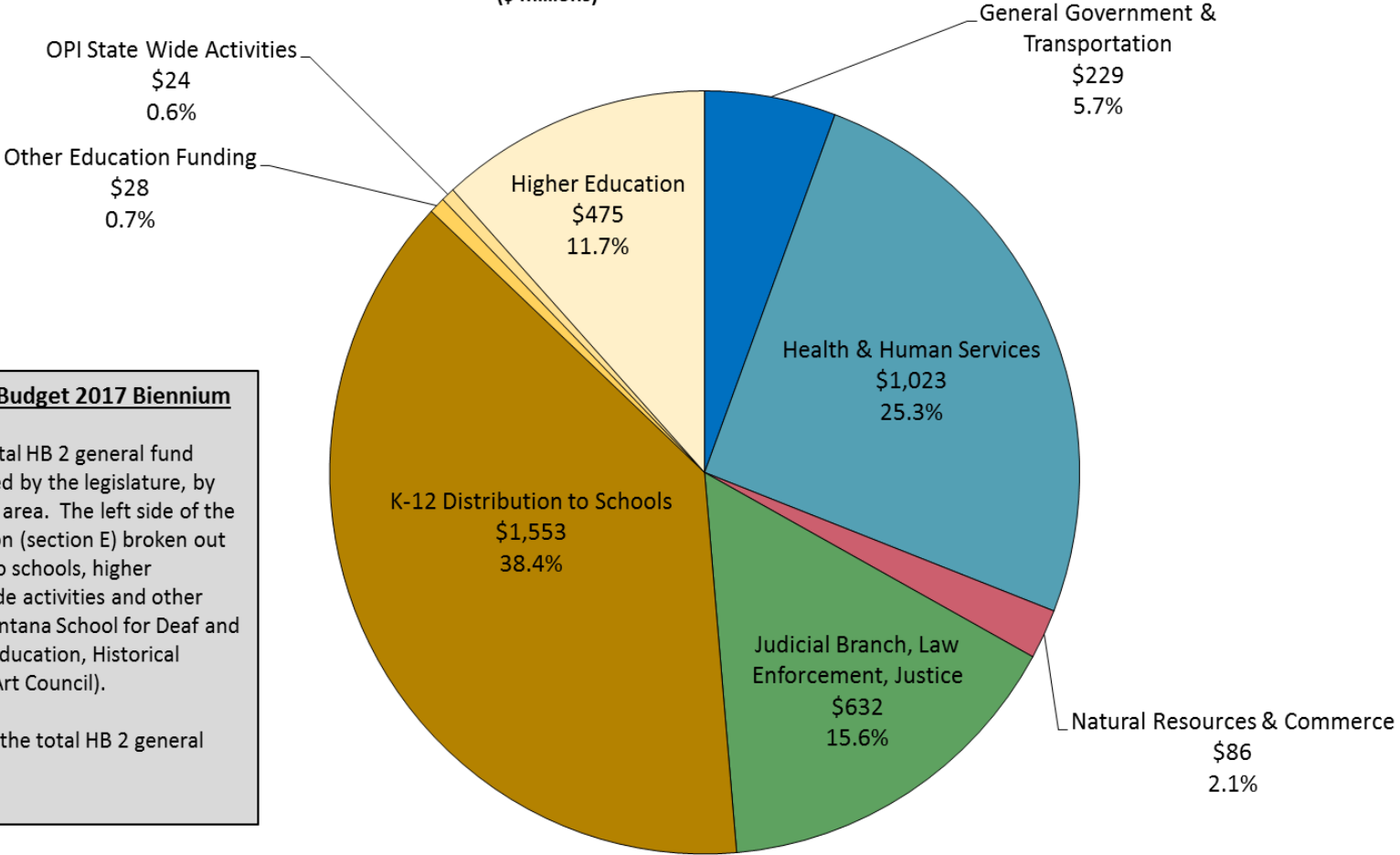
The money the state spends on K-12 comes from a variety of sources
 (Amounts listed are in millions, from FY 15, and heavily rounded to reflect 50,000' view!)



<http://leg.mt.gov/content/Publications/fiscal/other-interim-reports/School-Funding-Presentation-Sept-2012-ELG.pdf> (modified for this presentation)

K-12 funding is a large part of the state's general fund budget.

2017 Biennium Legislative Budget by Function
General Fund - HB2 Only = \$4,050
 (\$ millions)



HB 2 General Fund Budget 2017 Biennium

This pie chart shows total HB 2 general fund expenditures as adopted by the legislature, by government functional area. The left side of the chart contains Education (section E) broken out into K-12 distribution to schools, higher education, OPI statewide activities and other education funding (Montana School for Deaf and Blind, Board of Public Education, Historical Society, State Library, Art Council).

K-12 Funding is 38% of the total HB 2 general fund.