

INFORMATION PAPER

PREPARED BY: Joe Foster, Administrator – Montana Veterans Affairs Division

HISTORICAL ANALYSIS OF VETERANS BENEFIT CLAIM SERVICES: Daniels / Garfield / McCone / Richland / Roosevelt / Sheridan / Valley Counties

OVERVIEW:

In July 2008, the Wolf Point (Roosevelt County) veterans service office was established and provided claim services to Daniels, Garfield, McCone, Richland, Roosevelt, Sheridan and Valley Counties. The office functioned through June 2010, when it was closed. The counties' veterans service responsibilities were assigned to the Miles City (Daniels, McCone, Richland, Roosevelt and Sheridan), Havre (Valley) and Billings (Garfield) veterans service offices. These offices have conducted outreach services to their assigned counties for five years. This analysis tabulates the production totals of the two predominate types of veteran benefit claim products – disability compensation and VA pension. These two types of claim products, when approved by the federal VA, result in the clients receiving financial benefit (monthly payments) and/or medical services, as authorized by the VA's healthcare system.

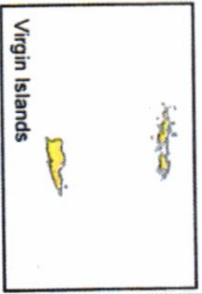
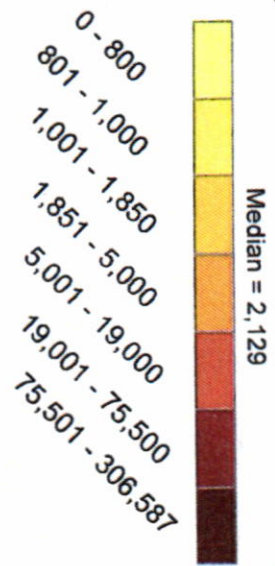
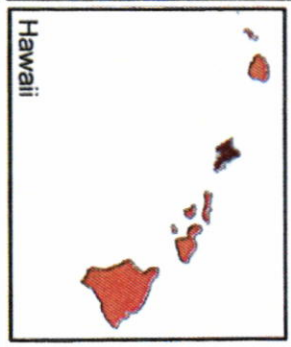
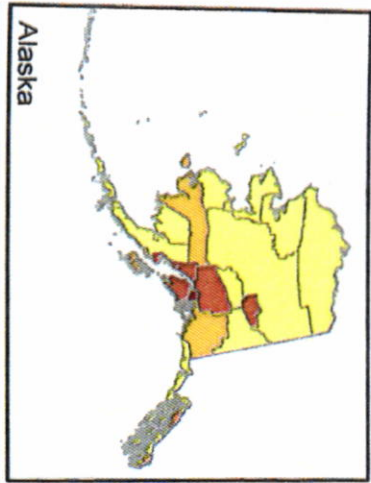
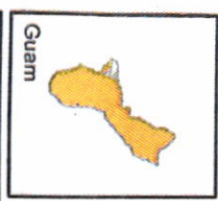
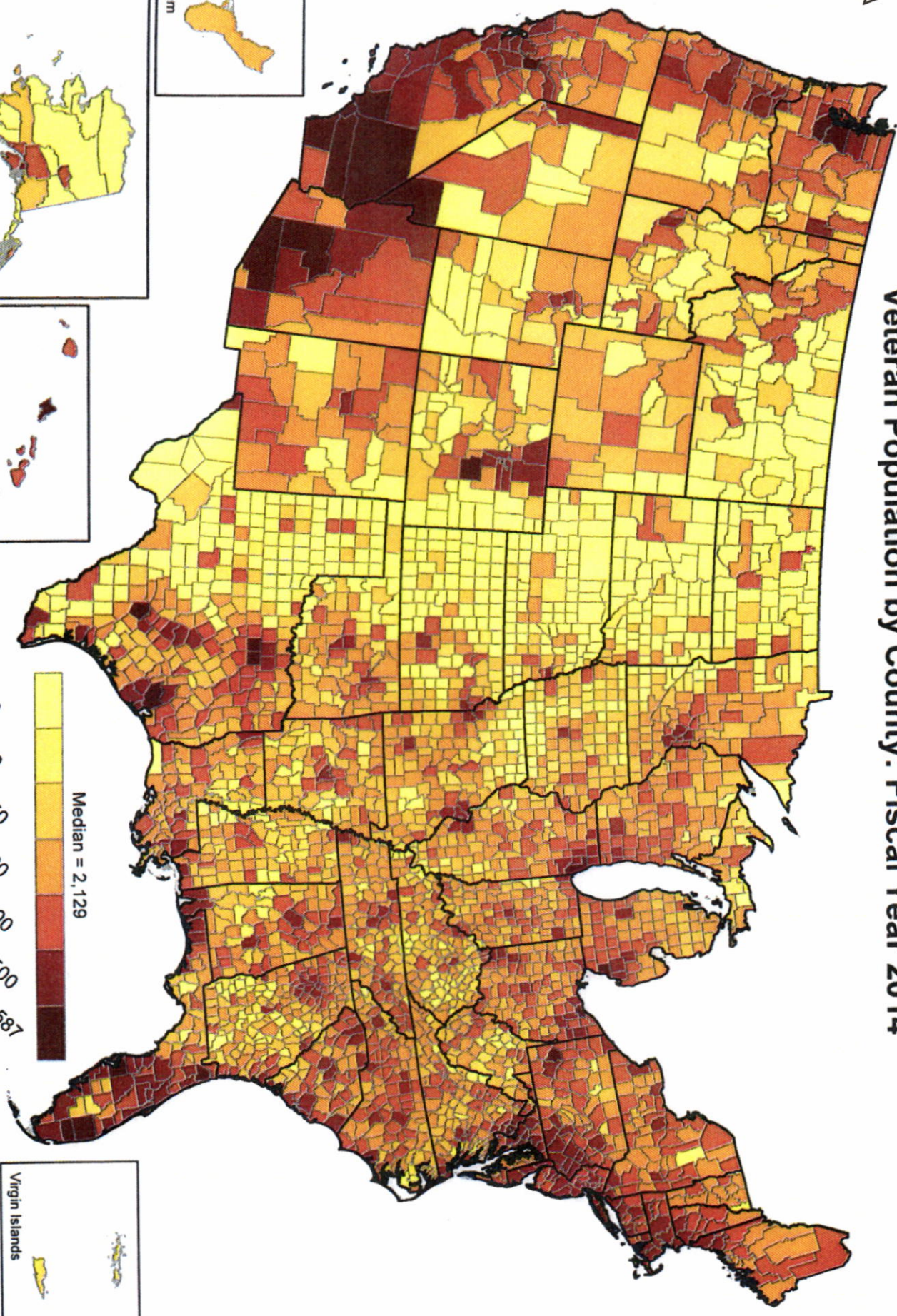
VETERAN BENEFIT CLAIMS PRODUCTION: DISABILITY COMPENSATION AND VA PENSION

<u>County</u>	<u>FY08</u>	<u>FY09</u>	<u>FY10</u>	<u>FY11</u>	<u>FY12</u>	<u>FY13</u>	<u>FY14</u>	<u>FY15</u>
Daniels	0	4	1	2	4	6	3	1
Garfield	0	2	1	1	3	2	1	2
McCone	1	1	3	6	0	2	1	1
Richland	16	17	12	13	15	16	14	12
Roosevelt	22	24	14	9	13	36	18	16
Sheridan	3	3	2	2	2	1	5	2
Valley	<u>18</u>	<u>17</u>	<u>9</u>	<u>16</u>	<u>22</u>	<u>12</u>	<u>10</u>	<u>18</u>
TOTAL	60	68	42	49	59	75	52	52

	<u>3-Year Annual Claims Prod. Ave.</u>	<u>5-Year Annual Claims Prod. Ave.</u>
Wolf Point Veterans Service Office	56	
Outreach-Based Service Program		57
Richland County (Sidney)	15	14
Roosevelt County (Wolf Point – service office)	20	18
Valley County (Glasgow)	14	15

CONCLUSION: The outreach-based service program operated by the Miles City/Billings/Havre veterans service offices has generated a comparably equal annual average of the measured claim products – both region-wide and specific to the three highest veteran population counties – as was produced when the Wolf Point veterans service office existed. Historical claims production data and existing/forecast veteran demographics do not support re-establishing a veterans service office in the region. Rather, FTE investment should be made into areas with higher/forecasted higher veteran demographics, and areas shown to be underserved – based upon number of veterans service officers per veteran population.

Veteran Population by County: Fiscal Year 2014



FY14 GEOGRAPHIC DISTRIBUTION OF VA EXPENDITURES (GDY)

**FY14 Summary of Expenditures by State
Expenditures in \$000s**

County/ Congressional District	Veteran Population*	Total Expenditure	Compensation & Pension	Construction	Education & Vocational/Rehabilitation/ Employment	Loan Guaranty#	General Operating Expenses	Insurance & Indemnities	Medical Care	Unique Patients**
BEAVERHEAD	971	\$ 5,930	\$ 3,049	-	\$ 235	-	-	\$ 85	\$ 2,560	277
BIG HORN	882	\$ 5,721	\$ 2,373	-	\$ 102	-	-	\$ 29	\$ 3,217	248
BLAINE	579	\$ 5,014	\$ 2,633	-	\$ 226	-	-	\$ 24	\$ 2,131	163
BROADWATER	526	\$ 6,594	\$ 2,681	-	\$ 143	-	-	\$ 35	\$ 3,735	334
CARBON	868	\$ 6,704	\$ 2,960	-	\$ 180	-	-	\$ 47	\$ 3,518	362
CARTER	74	\$ 574	\$ 260	-	\$ 5	-	-	\$ 13	\$ 297	37
CASCADE	11,138	\$ 82,010	\$ 47,440	-	\$ 7,706	-	-	\$ 1,506	\$ 25,358	3,557
CHOUTEAU	540	\$ 4,145	\$ 1,680	-	\$ 56	-	-	\$ 310	\$ 2,099	203
CUSTER	1,255	\$ 14,003	\$ 4,025	-	\$ 180	-	-	\$ 101	\$ 9,696	487
DANIELS	195	\$ 905	\$ 458	-	\$ 28	-	-	\$ 17	\$ 400	57
DAWSON	886	\$ 4,025	\$ 1,990	-	\$ 63	-	-	\$ 19	\$ 1,953	259
DEER LODGE	1,171	\$ 8,102	\$ 3,303	-	\$ 207	-	-	\$ 2	\$ 4,590	450
FALLON	198	\$ 1,004	\$ 284	-	\$ 16	-	-	\$ 0	\$ 704	49
FERGUS	1,134	\$ 9,619	\$ 4,157	-	\$ 220	-	-	\$ 43	\$ 5,199	477
FLATHEAD	9,238	\$ 57,561	\$ 29,591	-	\$ 2,472	-	-	\$ 694	\$ 24,805	3,679
GALLATIN	6,517	\$ 39,347	\$ 17,715	-	\$ 7,234	-	-	\$ 719	\$ 13,678	1,994
GARFIELD	106	\$ 376	\$ 95	-	\$ 40	-	-	\$ 1	\$ 240	35
GLACIER	858	\$ 6,846	\$ 3,500	-	\$ 148	-	-	\$ 26	\$ 3,173	331
GOLDEN VALLEY	94	\$ 804	\$ 423	-	\$ 12	-	-	\$ 0	\$ 369	49
GRANITE	393	\$ 2,553	\$ 797	-	\$ 21	-	-	\$ 2	\$ 1,732	129
HILL	1,338	\$ 8,729	\$ 4,434	-	\$ 541	-	-	\$ 140	\$ 3,614	428
JEFFERSON	1,202	\$ 14,669	\$ 5,635	-	\$ 263	-	-	\$ 169	\$ 8,602	595
JUDITH BASIN	217	\$ 1,572	\$ 905	-	\$ 6	-	-	\$ 1	\$ 661	77
LAKE	3,148	\$ 15,781	\$ 8,114	-	\$ 400	-	-	\$ 148	\$ 7,118	994
LEWIS AND CLARK	7,151	\$ 97,023	\$ 32,294	\$ 250	\$ 3,467	-	\$ 8,088	\$ 1,060	\$ 51,863	3,702
LIBERTY	129	\$ 968	\$ 545	-	\$ 28	-	-	\$ 14	\$ 383	32
LINCOLN	2,675	\$ 18,420	\$ 11,031	-	\$ 318	-	-	\$ 122	\$ 6,949	1,099
MCCONE	155	\$ 1,067	\$ 389	-	\$ 11	-	-	\$ 0	\$ 667	71
MADISON	873	\$ 5,450	\$ 2,463	-	\$ 106	-	-	\$ 39	\$ 2,842	324
MEAGHER	234	\$ 1,727	\$ 700	-	\$ 18	-	-	\$ 2	\$ 1,007	98
MINERAL	558	\$ 4,719	\$ 2,397	-	\$ 111	-	-	\$ 242	\$ 1,968	245
MISSOULA	9,928	\$ 62,262	\$ 27,485	-	\$ 7,848	-	-	\$ 454	\$ 26,475	3,102
MUSSELSHELL	528	\$ 4,589	\$ 2,309	-	\$ 46	-	-	\$ 9	\$ 2,224	222
PARK	1,568	\$ 8,081	\$ 4,092	-	\$ 394	-	-	\$ 53	\$ 3,542	490
PETROLEUM	37	\$ 434	\$ 156	-	\$ 13	-	-	\$ 10	\$ 255	20
PHILLIPS	336	\$ 2,362	\$ 1,098	-	\$ 17	-	-	\$ 54	\$ 1,193	152
PONDERA	558	\$ 3,895	\$ 2,087	-	\$ 118	-	-	\$ 52	\$ 1,637	194
POWDER RIVER	126	\$ 862	\$ 382	-	\$ 21	-	-	\$ 2	\$ 458	59
POWELL	1,050	\$ 5,622	\$ 2,328	-	\$ 180	-	-	\$ 17	\$ 3,096	343
PRAIRIE	130	\$ 1,315	\$ 631	-	\$ 17	-	-	\$ 0	\$ 667	56
RAVALLI	5,037	\$ 38,424	\$ 20,626	-	\$ 941	-	-	\$ 263	\$ 16,594	1,748

FY14 GEOGRAPHIC DISTRIBUTION OF VA EXPENDITURES (GDY)

FY14 Summary of Expenditures by State
Expenditures in \$000s

County/ Congressional District	Veteran Population*	Total Expenditure	Compensation & Pension	Construction	Education & Vocational Rehabilitation/ Employment	Loan Guaranty#	General Operating Expenses	Insurance & Indemnities	Medical Care	Unique Patients**
RICHLAND	664	\$ 3,701	\$ 1,961	\$ -	\$ 89	\$ -	\$ -	\$ 39	\$ 1,612	221
ROOSEVELT	865	\$ 4,478	\$ 2,068	\$ -	\$ 237	\$ -	\$ -	\$ 101	\$ 2,072	236
ROSEBUD	773	\$ 5,162	\$ 2,073	\$ -	\$ 143	\$ -	\$ -	\$ 82	\$ 2,864	241
SANDERS	1,571	\$ 12,300	\$ 7,132	\$ -	\$ 141	\$ -	\$ -	\$ 12	\$ 5,015	617
SHERIDAN	311	\$ 939	\$ 421	\$ -	\$ 15	\$ -	\$ -	\$ 2	\$ 501	60
SILVER BOW	3,442	\$ 25,478	\$ 10,332	\$ -	\$ 1,677	\$ -	\$ -	\$ 103	\$ 13,366	1,330
STILLWATER	800	\$ 6,319	\$ 2,548	\$ -	\$ 112	\$ -	\$ -	\$ 42	\$ 3,617	364
SWEET GRASS	359	\$ 2,163	\$ 1,044	\$ -	\$ 42	\$ -	\$ -	\$ 30	\$ 1,048	127
TETON	648	\$ 3,657	\$ 2,063	\$ -	\$ 114	\$ -	\$ -	\$ 67	\$ 1,413	217
TOOLE	523	\$ 2,502	\$ 1,354	\$ -	\$ 27	\$ -	\$ -	\$ 7	\$ 1,113	159
TREASURE	83	\$ 460	\$ 91	\$ -	\$ 5	\$ -	\$ -	\$ -	\$ 363	28
VALLEY	729	\$ 5,117	\$ 1,941	\$ -	\$ 110	\$ -	\$ -	\$ 28	\$ 3,037	298
WHEATLAND	187	\$ 2,176	\$ 859	\$ -	\$ 3	\$ -	\$ -	\$ 17	\$ 1,296	104
WIBAUX	73	\$ 442	\$ 233	\$ -	\$ 5	\$ -	\$ -	\$ 7	\$ 197	29
YELLOWSTONE	14,018	\$ 97,052	\$ 41,456	\$ -	\$ 5,288	\$ -	\$ -	\$ 885	\$ 49,423	4,707
MONTANA (Totals)	99,646	\$ 731,755	\$ 335,093	\$ 250	\$ 42,166	\$ -	\$ 8,088	\$ 7,950	\$ 338,208	35,966
CONG. DIST (01)	99,646	\$ 731,755	\$ 335,093	250	\$ 42,166	-	\$ 8,088	\$ 7,950	\$ 338,208	35,966
MONTANA (Totals)	99,646	\$ 731,755	\$ 335,093	\$ 250	\$ 42,166	\$ -	\$ 8,088	\$ 7,950	\$ 338,208	35,966

FY14 GEOGRAPHIC DISTRIBUTION OF VA EXPENDITURES (GDY)

**FY14 Summary of Expenditures by State
Expenditures in \$000s**

County/ Congressional District	Veteran Population*	Total Expenditure	Compensation & Pension	Construction	Education & Vocational Rehabilitation/ Employment	Loan Guaranty#	General Operating Expenses	Insurance & Indemnities	Medical Care	Unique Patients**
Notes:										

* Veteran population estimates, as of September 30, 2014, are produced by the VA Office of the Actuary (VePop 2014).

Prior to FY 08, "Loan Guaranty" expenditures were included in the Education & Vocational Rehabilitation and Employment (E&VRE) programs. Currently, all "Loan Guaranty" expenditures are attributed to Travis County, TX, where all Loan Guaranty payments are processed. VA will continue to improve data collection for future GDY reports to better distribute loan expenditures at the state, county and congressional district levels.

** Unique patients are patients who received treatment at a VA health care facility. Data are provided by the Allocation Resource Center (ARC).

Expenditure data sources: USASpending.gov for Compensation & Pension (C&P) and Education and Vocational Rehabilitation and Employment (E&VRE) Benefits; Veterans Benefits Administration and the Allocation Resource Center (ARC) for Medical Care costs.

1. Expenditures are rounded to the nearest thousand dollars. For example, \$500 to \$1,000 are rounded to \$1,000 and \$0 to \$499 are rounded to \$0. and "\$ - " = 0 or no expenditures.
2. The Compensation & Pension expenditures include dollars for the following programs: veterans' compensation for service-connected disabilities; dependency and indemnity compensation for service-connected deaths; veterans' pension for nonservice-connected disabilities; and burial and other benefits to veterans and their survivors.
3. Medical Care expenditures include dollars for medical services, medical administration, facility maintenance, educational support, research support, and other overhead items. Medical Care expenditures do not include dollars for construction or other non-medical support.
4. Medical Care expenditures are based on where patients live instead of where care is delivered.
5. A star symbol (*) in the Unique Patients column denotes that there were less than 10 Unique Patients.

MONTANA VETERANS AFFAIRS DIVISION

- Veterans Services Program -

FINANCIAL IMPACT – FEDERAL VA \$ TO VETERANS/FAMILY RESULTANT OF
AGENCY'S BENEFIT CLAIM WORK EFFORT

- FISCAL YEARS 2014/2015 -

<u>COUNTY</u>	<u>CLAIMS PRODUCTION</u>	<u>FINANCIAL IMPACT</u>	<u>NOTES</u>
Beaverhead	24	\$ 1,911,399	
Big Horn	35	\$ 1,915,619	
Blaine	38	\$ 3,273,484	
Broadwater	32	\$ 2,364,615	
Carbon	44	\$ 2,549,780	
Carter	2	\$ 131,817	
Cascade	647	\$ 54,098,323	Service Office
Chouteau	36	\$ 2,037,608	
Custer	106	\$ 5,226,399	Service Office
Daniels	6	\$ 362,310	
Dawson	61	\$ 2,271,381	
Deer Lodge	25	\$ 2,980,984	
Fallon	12	\$ 251,574	
Fergus	127	\$ 4,507,453	Service Office
Flathead	343	\$ 27,779,893	Service Office
Gallatin	381	\$ 25,108,950	Service Office
Garfield	4	\$ 163,050	
Glacier	96	\$ 4,298,449	
Golden Valley	0	\$ 297,847	
Granite	7	\$ 514,992	
Hill	106	\$ 6,353,529	Service Office
Jefferson	42	\$ 3,549,764	
Judith Basin	9	\$ 619,132	
Lake	86	\$ 6,998,999	
Lewis and Clark	437	\$ 23,436,907	Service Office
Liberty	3	\$ 628,198	
Lincoln	63	\$ 6,614,952	
Madison	21	\$ 1,683,444	
McCone	3	\$ 177,695	
Meagher	9	\$ 512,983	
Mineral	32	\$ 1,875,544	
Missoula	524	\$ 28,731,474	Service Office

<u>COUNTY</u>	<u>CLAIMS PRODUCTION</u>	<u>FINANCIAL IMPACT</u>	<u>NOTES</u>
Musselshell	17	\$ 1,885,861	
Park	59	\$ 5,735,732	
Petroleum	3	\$ 102,691	
Phillips	22	\$ 1,580,422	
Pondera	33	\$ 2,508,620	
Powder River	5	\$ 203,093	
Powell	29	\$ 1,535,423	
Prairie	17	\$ 602,842	
Ravalli	126	\$ 11,927,197	
Richland	34	\$ 1,821,988	
Roosevelt	43	\$ 2,029,950	
Rosebud	26	\$ 1,827,154	
Sanders	56	\$ 6,167,578	
Sheridan	14	\$ 503,670	
Silver Bow	96	\$ 9,578,402	Service Office
Stillwater	52	\$ 2,894,148	
Sweet Grass	10	\$ 1,502,485	
Teton	32	\$ 1,982,447	
Toole	41	\$ 1,705,302	
Treasure	0	\$ 76,380	
Valley	39	\$ 2,187,884	
Wheatland	28	\$ 976,391	
Wibaux	9	\$ 180,895	
Yellowstone	<u>657</u>	<u>\$ 47,424,878</u>	Service Office
TOTALS	4809	\$330,169,982	
Out of Area Claimwork	<u>214</u>		
TOTAL	5023		