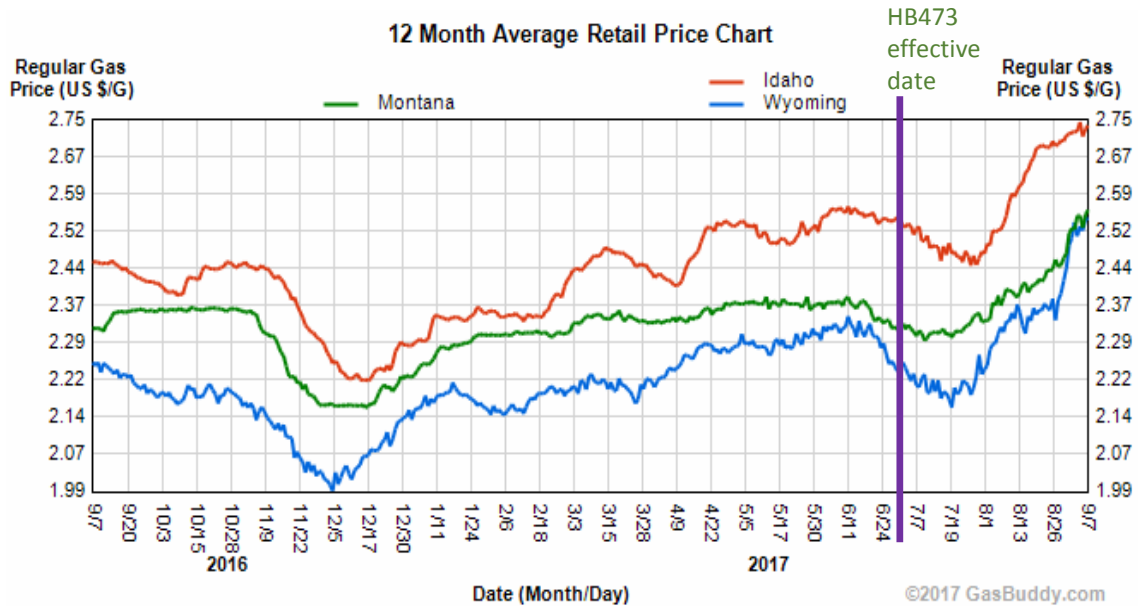
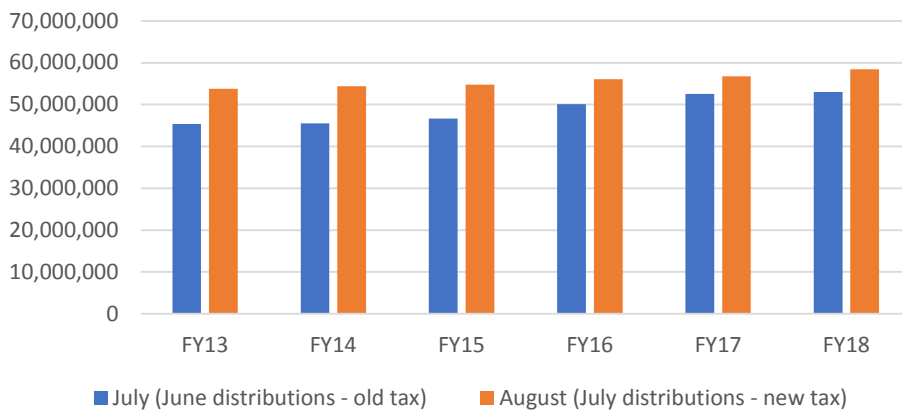


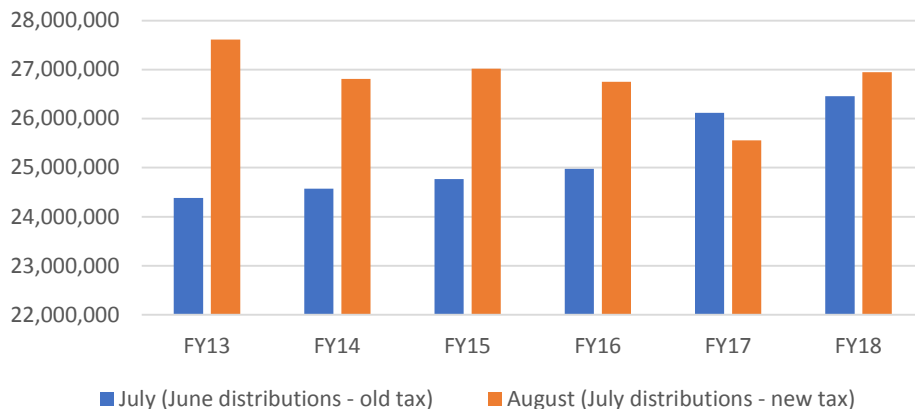
Early impacts of HB473



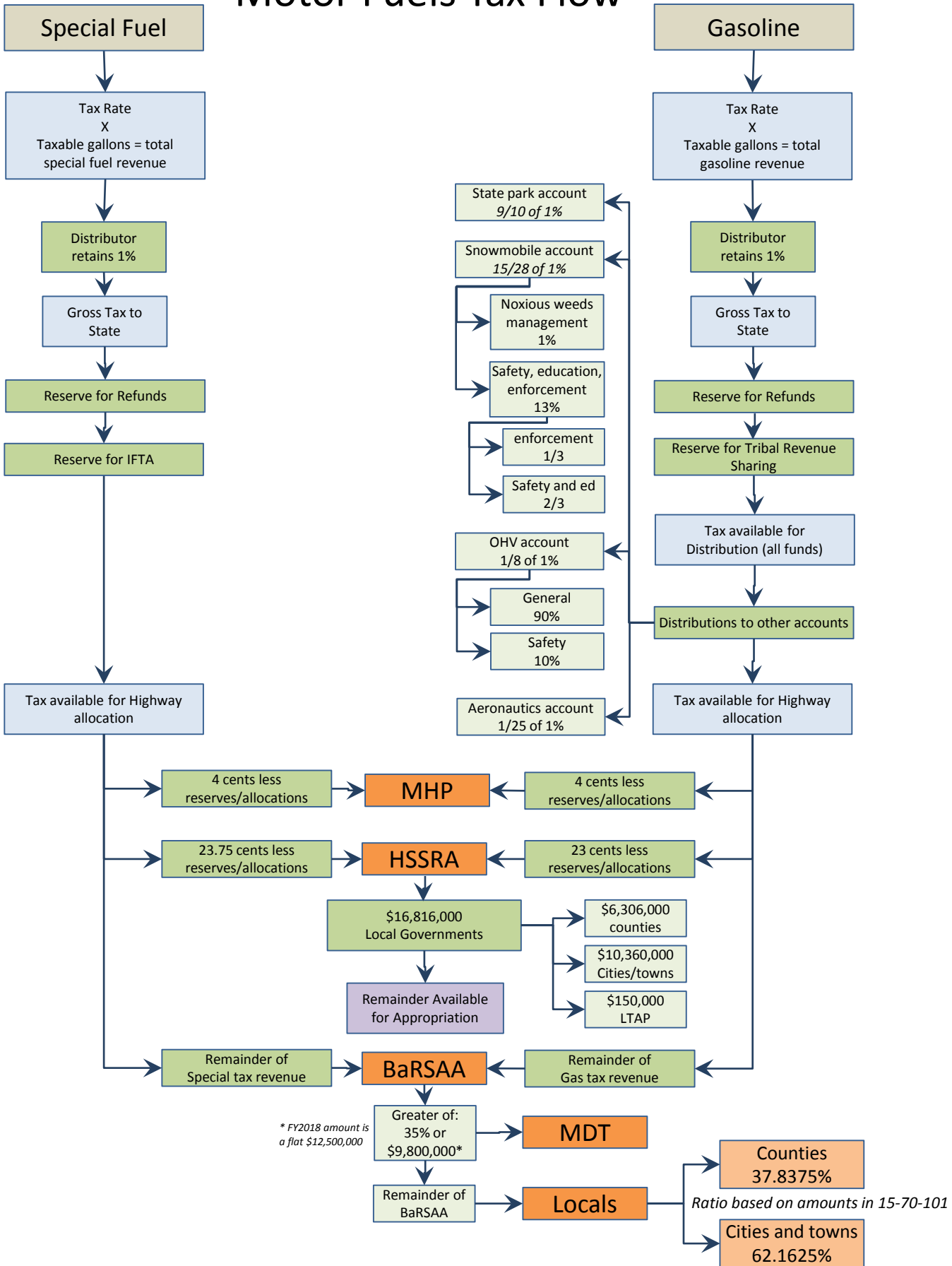
Taxable Gasoline Gallons



Taxable Special Fuel Gallons



Motor Fuels Tax Flow



Motor Fuel Tax Distribution - Projections - FY18

TOTAL Distributions:	Without HB473/HB650:	With HB473/HB650:	Difference:	
Distributor allowance	2,303,321	2,598,005	294,684	
Reserve for Refunds/IFTA	8,682,060	9,350,164	668,104	
Reserve for Tribal Revenue Sharing	5,146,529	6,004,284	857,755	
State Park Account	1,284,268	1,498,313	214,045	
Snowmobile - General	657,423	766,994	109,571	
Snowmobile - Noxious Weeds Management	7,644	8,919	1,274	
Snowmobile - Enforcement	33,126	38,647	5,521	
Snowmobile - Safety and Education	66,252	77,294	11,042	
OHV Account - general	160,534	187,289	26,756	
OHV Account - safety	17,837	20,810	2,973	
Aeronautics Account	57,079	66,592	9,513	
County gas tax allocation	6,306,000	6,306,000	-	
City gas tax allocation	10,360,000	10,360,000	-	
LTAP gas tax allocation	150,000	150,000	-	
MHP		31,108,672	31,108,672	
BaRSSA - MDT (greater of \$9.8 mil or 35%)		12,500,000	12,500,000	
BaRSSA - Local		14,767,123	14,767,123	
HSSRA (available for appropriation)*	195,100,069	163,991,397	(31,108,672)	
* MDT, MHP, MVD prior to HB650, after HB650 is MDT only				
TOTAL MOTOR FUEL TAX REVENUE	230,332,142	259,800,502	29,468,359	

HSSRA Working Capital

FY 2017 Working Capital Balance of HSRA (\$ millions)		
Item	FY 2017 Budgeting Assessment	FY 2017 Actuals
HSRA Restricted Account - 02422		
Beginning Fund Balance	\$35.6	\$35.1
Total Revenues	295.7	292.5
<u>Expenditures</u>		
Montana Department of Transportation (MDT)		
MDT SA and Tribal Distributions	23.7	22.7
MDT HB 2	272.8	218.2
Other HSRA Appropriations		
Department of Justice (DOJ) HB 2	39.5	39.0
MDT (HB 10)	4.6	0.3
FWP (HB 5)	1.9	0.2
MDT LRBP (HB 5)	<u>6.2</u>	<u>1.4</u>
Total Expenditures	348.6	281.8
Net Revenues Less Expenditures	<u>(52.9)</u>	<u>10.7</u>
Subtotal Ending Balance	(17.3)	45.9
2017 Biennium Projected Reversion	46.5	0.0
Working Capital Balance (02422)	\$29.2	\$45.9

Highway Construction Obligation and Expenditures

