

# Montana Board of Veterans Affairs

*“The people declare that Montana servicemen, servicewomen, and veterans may be given special considerations determined by the legislature”*

Article II, Section 35, Montana Constitution

## **Biennial Report – July 1, 2016**

Prepared by: Joe Foster, 324-3741, [jofoster@mt.gov](mailto:jofoster@mt.gov)  
Administrator – MT Veterans Affairs Division



# Montana Board of Veterans Affairs

## - *Mission and Composition* -

Mission: Oversee the State of Montana's provision of veterans services, as provided by the Montana Veterans Affairs Division.

<> **20 members; 11 voting, 9 non-voting.**

+ 11 voting members; 10 appointed by Governor, 1 appointed by Montana's eight Tribal Councils (consensus).

- 5 represent geographic regions of the state. \*
  - 1 is an "at-large" veterans' representative. \*
  - 1 is the Native American veterans' representative. \*
  - 1 is Montana's Tribal Councils' consensus appointee. \*
  - 3 have training, experience or education related to veteran issues.
- \* **Must be an honorably discharged veteran.**

+ 9 non-voting members representing: Governor's Office of Indian Affairs / State Dept. of Military Affairs / State Dept. of Public Health and Human Services / U.S. Dept. of Veterans Affairs / U.S. Dept. of Labor / Montana's Congressional Delegation (3) / State Administration and Veterans Affairs Interim Committee.

# Montana Veterans Affairs Division

## - Mission -

*Promote the general welfare of Montana veterans and their families.*

### THRU:

- Establishment of a statewide network of service for military veterans and their families.
- Provision of services and assistance for all Montana veterans and surviving spouses and dependents; in coordination with associated federal and state agencies, veterans services organizations, private organizations and individuals.
- Management, operation and maintenance of Montana's state veterans cemetery program.
- Assist and advise the general public, governmental agencies, and elected officials regarding veterans services, programs, initiatives and policy.

# Montana Veterans Affairs Division

## - Major Program Initiatives in FY15/16 -

### Veterans Services Outreach:

- ◆ Board of Veterans Affairs – Six meetings conducted: 2 in Helena, 1 in Belgrade, 1 in Crow Agency, and 2 via teleconference.
- ◆ Community Outreach – 10 veterans service office locations with consistent, statewide outreach services provided to 40+ Montana communities, state institutions and Tribal Nations.
- ◆ Media – Agency website including service office/cemeteries contact information and outreach schedules, Board meeting minutes, federal VA contact information and “feature” items. Maintained Facebook connection to agency.

### State Veterans Cemetery Program:

- ◆ Eastern Montana State Veterans Cemetery (Miles City) – Preapplication for VA construction grant approved.
- ◆ Montana State Veterans Cemetery (Fort Harrison) – Preapplication for VA construction grant approved. Memorial Circle improvement project funded, construction to take place in FY17. Added .5 FTE groundskeeper.
- ◆ Western Montana State Veterans Cemetery (Missoula) – “Avenue of Flags” purchased/installed – fundraising effort funded. Added .5 FTE groundskeeper.

### Veterans Services Operations:

- ◆ Digit to Digit (D2D) – Per request of federal VA, Montana selected as one of three states piloting the D2D electronic claims submission program.
- ◆ Veterans of Foreign Wars – As requested and approved by the Montana VFW veterans organization, the division absorbed the VFW’s veterans services (claims production) program.
- ◆ Veterans Service Officers (VSO) – Fielded two VSO FTEs: Billings and Kalispell

# Montana Veterans Affairs Division

## - Organization -

### ◆ Organizational Personnel and Facility Locations

32 FTE:            1 - administrator

1 - office manager

1 - administrative/veterans services assistant

23 - veterans services officers

6 - veteran cemetery program

### 10 Veterans Services Offices:

Belgrade – Billings – Butte – Great Falls – Havre – Helena

Kalispell – Lewistown – Miles City – Missoula

### 3 State Veterans Cemeteries:

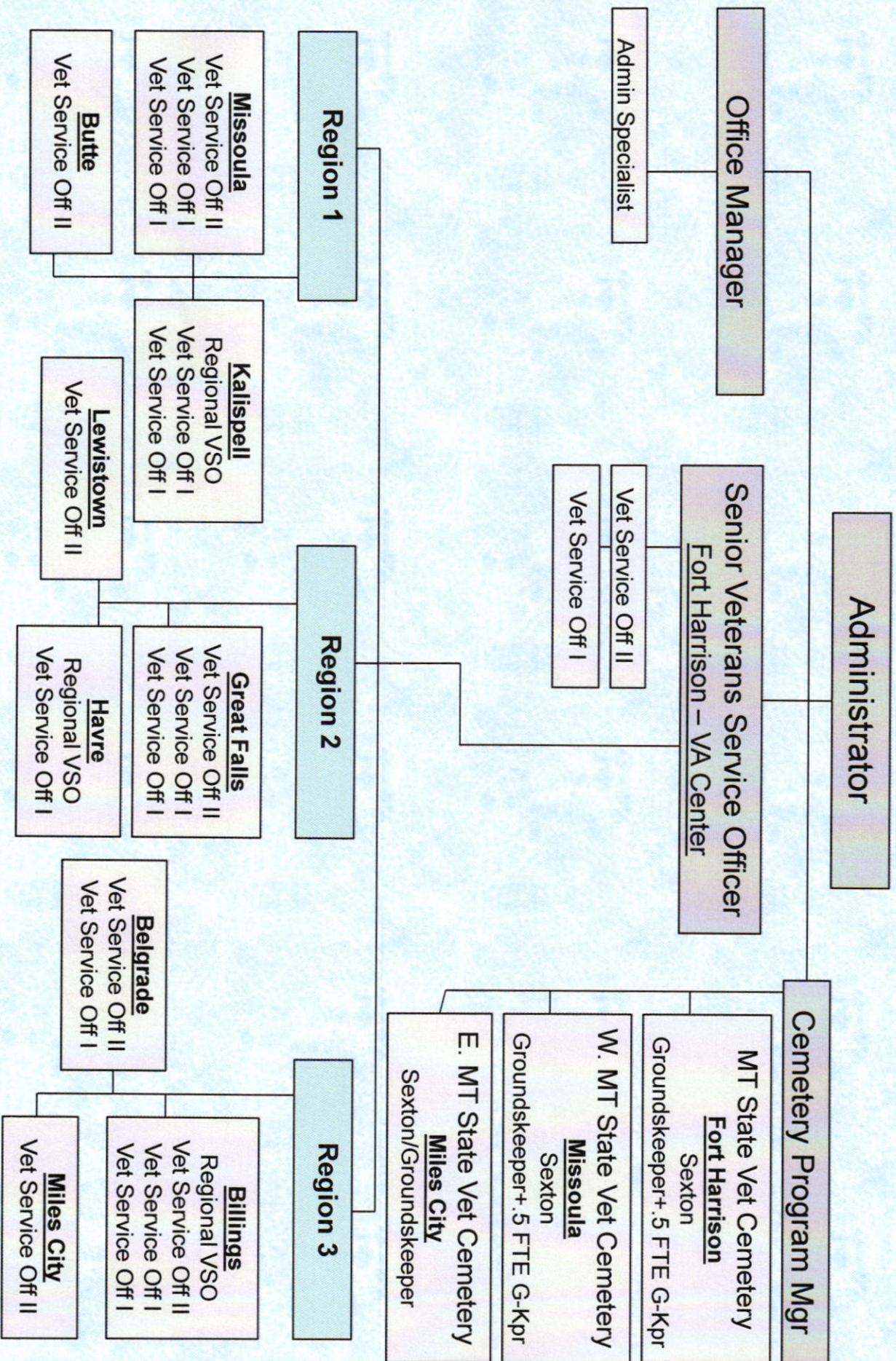
Montana State Veterans Cemetery – Fort Harrison (Helena)

Eastern Montana State Veterans Cemetery – Miles City

Western Montana State Veterans Cemetery – Missoula

Administration Office: Fort Harrison (MT National Guard HQ)

# Montana Veterans Affairs Division Organizational Chart



# Montana Veterans Affairs Division

## - Veterans Service Offices and Cemeteries -

### Veterans Service Offices:

#### Belgrade

350 Airport Road  
388-4601

#### Have

232 1st Street W.  
265-4225

#### Lewistown

505 West Main, Ste. 217  
538-3174

#### Billings

2795 Enterprise Ave.  
248-8579

#### Helena

Ft. Harrison VA Center  
495-2081

#### Miles City

210 S. Winchester  
874-5869

#### Butte

600 Gilman Ave.  
533-0910

#### Kalispell

2989 Hwy 93 North  
755-3795

#### Missoula

1911 Tower Road  
542-2501

#### Great Falls

600 Central Plaza, #300  
452-2265

### State Veterans Cemeteries:

#### Montana State Veterans Cemetery

Ft. Harrison (near Helena)  
324-3742

#### Eastern Montana State Veterans Cemetery

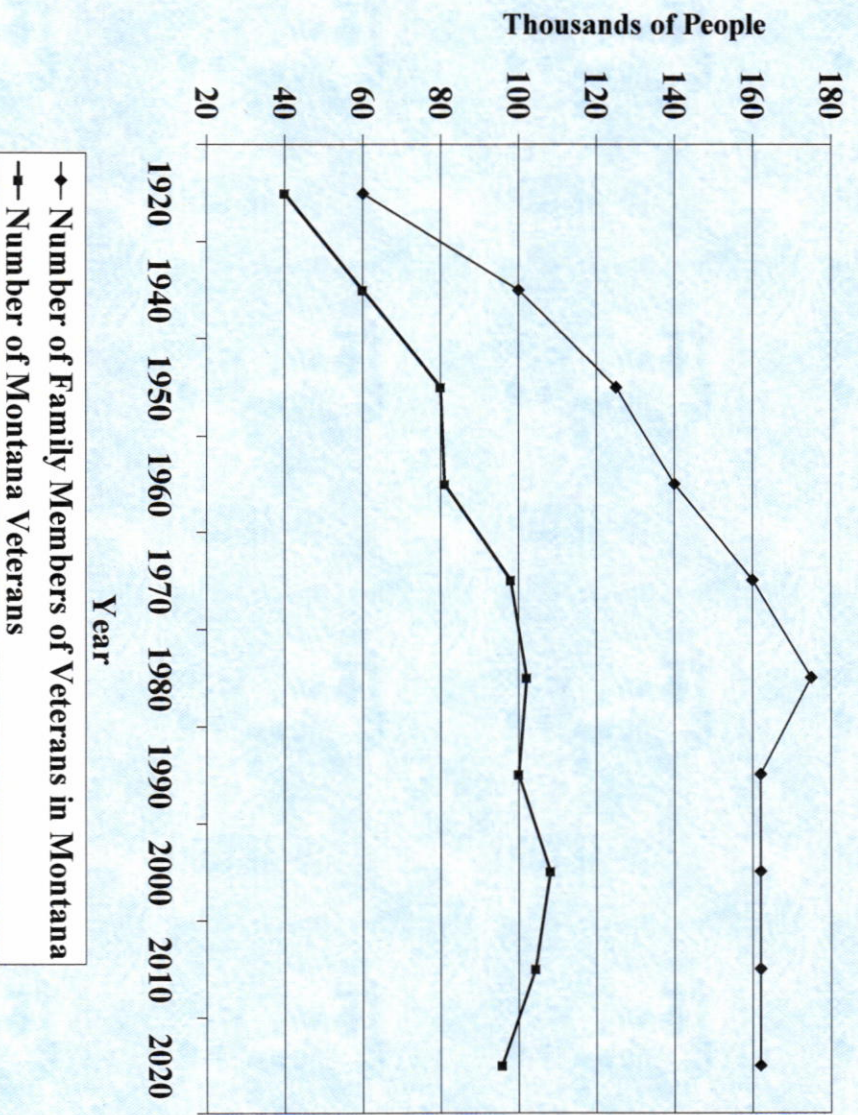
Miles City  
853-6963

#### Western Montana State Veterans Cemetery

Missoula - 531-1105

# Montana Veterans Affairs Division

## - Montana Veterans and Family Members -



Statistics per 2007 VetPop –  
U.S. Dept. of Veterans Affairs

#2 Per Capita – Montana's  
veteran population national  
ranking.

Veterans Montana  
99,646 (approx)

See Report's Map for County-Level  
Veteran Populations

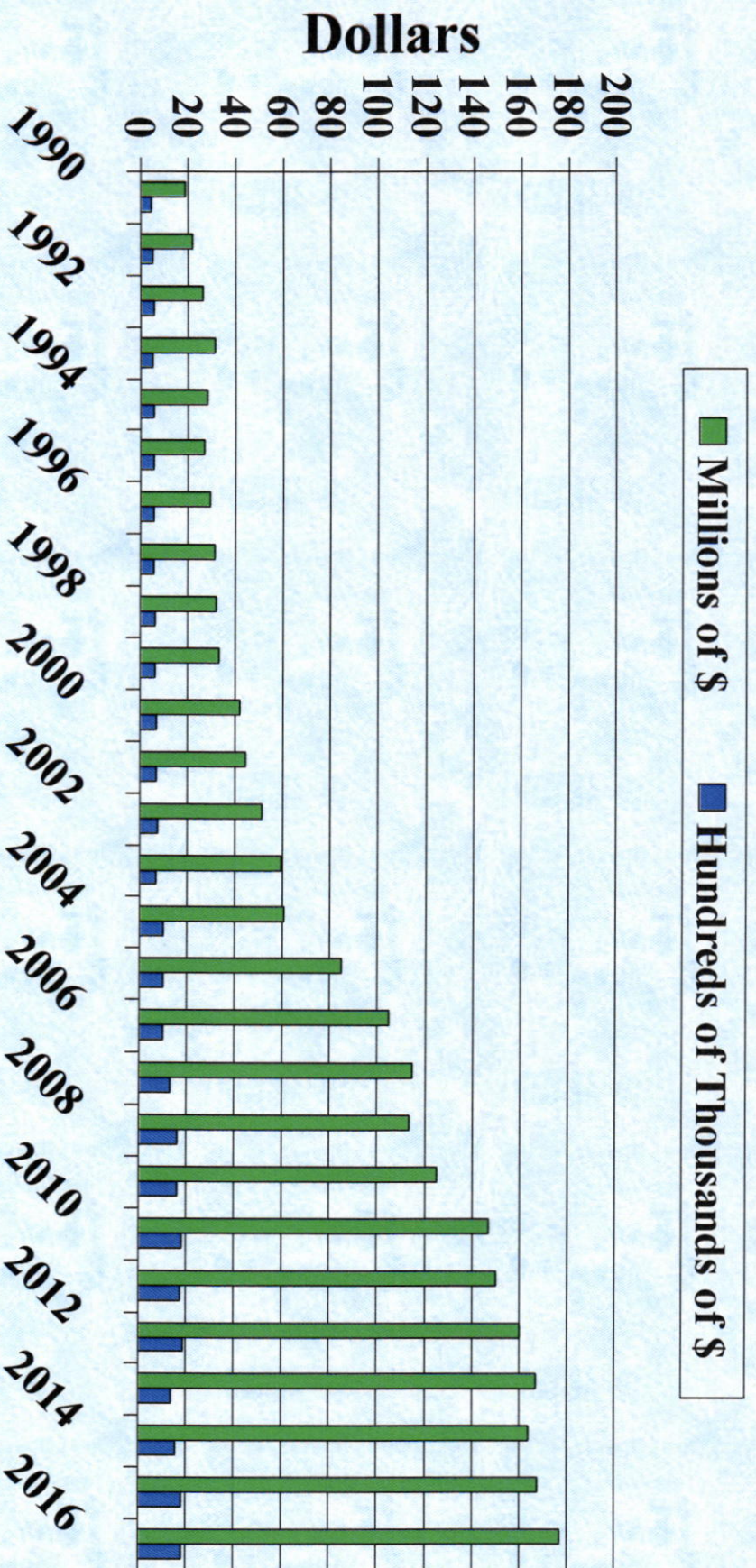
NOTE: Veteran family members  
statistics no longer available.



## Montana Veterans Affairs Division - Economic Impact of Agency Work Effort -

For every \$1 of state General/Special Fund invested into the Veterans Services Program, agency staff attained \$99 in federal VA monetary payments to Montana veterans.

FY16 MVAD Budget (blue) = \$1,789,959    FY16 Fed VA Payments (green) = \$177,153,396



## MONTANA VETERANS AFFAIRS DIVISION

### - Veterans Services Program -

FINANCIAL IMPACT – FEDERAL VA \$ TO VETERANS/FAMILY RESULTANT OF  
AGENCY'S BENEFIT CLAIM WORK EFFORT

- FISCAL YEARS 2015/2016 -

<u>COUNTY</u>	<u>CLAIMS PRODUCTION</u>	<u>FINANCIAL IMPACT</u>	<u>NOTES</u>
Beaverhead	26	\$ 1,985,966	
Big Horn	29	\$ 1,675,239	
Blaine	43	\$ 3,270,455	
Broadwater	27	\$ 2,139,147	
Carbon	53	\$ 2,517,582	
Carter	1	\$ 99,363	
Cascade	691	\$ 57,554,165	Service Office
Chouteau	22	\$ 2,208,755	
Custer	96	\$ 4,307,964	Service Office
Daniels	2	\$ 359,536	
Dawson	51	\$ 1,956,231	
Deer Lodge	23	\$ 3,138,205	
Fallon	7	\$ 198,774	
Fergus	136	\$ 4,678,319	Service Office
Flathead	509	\$ 28,751,403	Service Office
Gallatin	368	\$ 26,076,975	Service Office
Garfield	3	\$ 170,270	
Glacier	106	\$ 4,796,291	
Golden Valley	3	\$ 398,143	
Granite	5	\$ 498,120	
Hill	115	\$ 6,267,405	Service Office
Jefferson	50	\$ 4,384,410	
Judith Basin	10	\$ 650,985	
Lake	109	\$ 7,642,683	
Lewis and Clark	475	\$ 26,876,927	Service Office
Liberty	8	\$ 757,667	
Lincoln	98	\$ 8,219,649	
Madison	29	\$ 1,964,094	
McCone	3	\$ 136,090	
Meagher	8	\$ 401,364	
Mineral	31	\$ 2,264,765	
Missoula	557	\$ 31,002,447	Service Office

<u>COUNTY</u>	<u>CLAIMS PRODUCTION</u>	<u>FINANCIAL IMPACT</u>	<u>NOTES</u>
Musselshell	24	\$ 1,884,507	
Park	69	\$ 5,770,043	
Petroleum	4	\$ 246,319	
Phillips	24	\$ 1,596,661	
Pondera	31	\$ 2,567,775	
Powder River	4	\$ 249,363	
Powell	30	\$ 1,566,268	
Prairie	15	\$ 390,315	
Ravalli	145	\$ 13,151,583	
Richland	24	\$ 1,476,548	
Roosevelt	35	\$ 1,748,578	
Rosebud	20	\$ 1,823,612	
Sanders	54	\$ 5,866,040	
Sheridan	5	\$ 435,713	
Silver Bow	119	\$ 10,393,688	Service Office
Stillwater	42	\$ 2,634,087	
Sweet Grass	12	\$ 1,444,137	
Teton	16	\$ 2,186,777	
Toole	32	\$ 1,752,410	
Treasure	0	\$ 44,877	
Valley	42	\$ 2,861,314	
Wheatland	15	\$ 1,071,999	
Wibaux	5	\$ 165,955	
Yellowstone	<u>806</u>	<u>\$ 45,800,872</u>	Service Office
SUB-TOTAL	5267		
Out of Area Claims	<u>289</u>		

---

FY15/16 TOTAL: 5556 \$344,478,830

---

FY13/14 TOTAL: 5148 \$330,381,671

# Montana Veterans Affairs Division

## - State Veteran Cemeteries -

### Montana State Veterans Cemetery – Fort Harrison / Est. 1988

<u>Fiscal Year</u>	<u>Burials</u>
2015	218
2016	165
Total since 1988: 3773	

### Eastern Montana State Veterans Cemetery – Miles City / Est. 2002

<u>Fiscal Year</u>	<u>Burials</u>
2015	37
2016	49
Total since 2002: 543	

### Western Montana State Veterans Cemetery – Missoula / Est. 2008

<u>Fiscal Year</u>	<u>Burials</u>
2015	121
2016	155
Total since 2008: 1041	

## Montana Veteran Demographic Data

NOTE: All data provided as per latest federal VA or State of Montana information available.

Statewide Veteran Population: Source – Dept. of Veterans Affairs, as of 9/30/2014

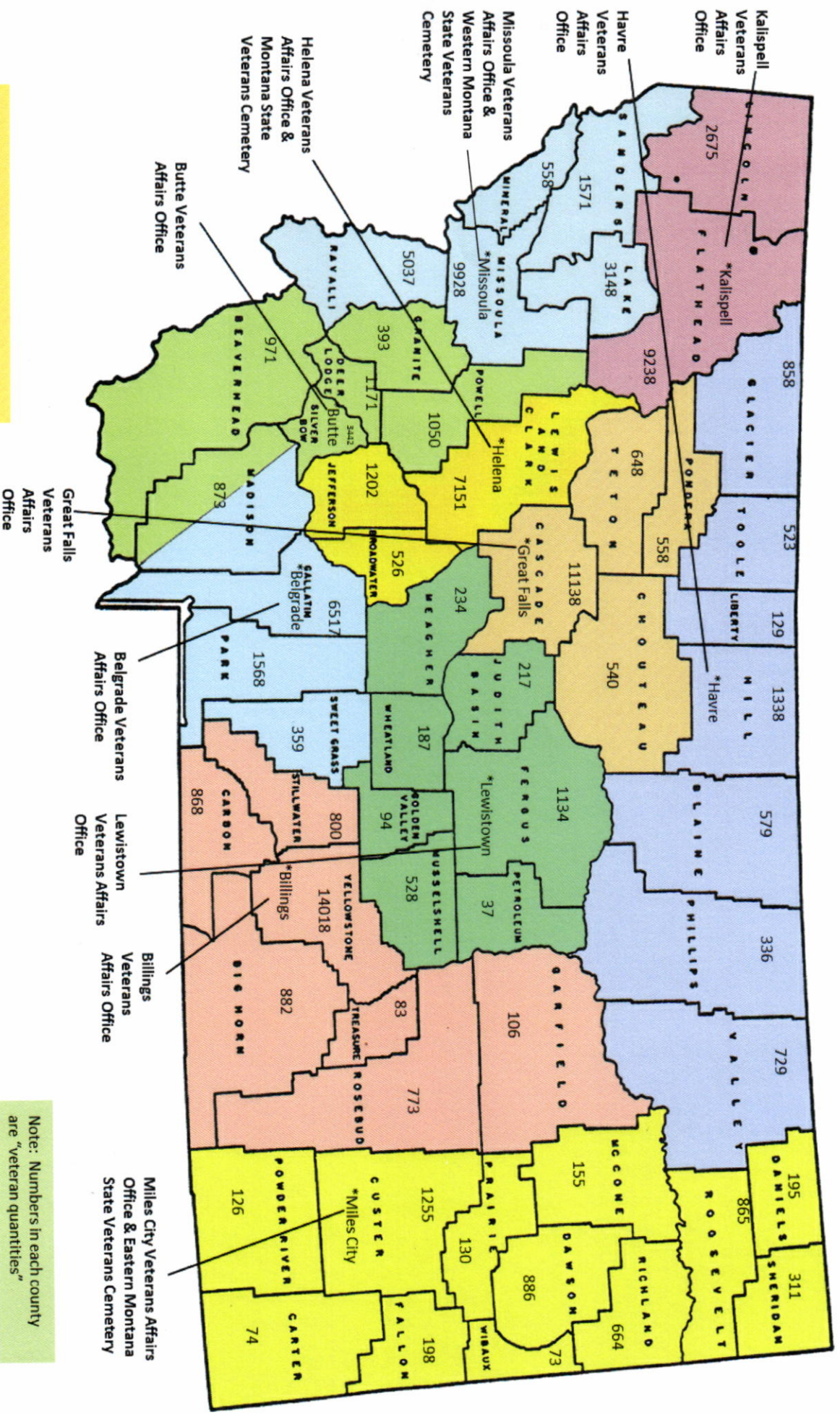
Total Population	Approx. 100,000													
Male Population	Approx. 92,000	- 92 %												
Female Population	Approx. 8,000	- 8 %												
American Indian	Approx. 3,500	- 3.5%												
<table style="width: 100%; border-collapse: collapse;"> <tr> <td style="width: 60%;">Gulf War I / II Era</td> <td style="width: 20%;">Approx. 32,000</td> <td style="width: 20%;">- 32 %</td> </tr> <tr> <td>Vietnam War Era</td> <td>Approx. 40,700</td> <td>- 40.7% (3<sup>rd</sup> highest nationally)</td> </tr> <tr> <td>Korean War Era</td> <td>Approx. 8,800</td> <td>- 8.7%</td> </tr> <tr> <td>World War II Era</td> <td>Approx. 4,900</td> <td>- 4.9%</td> </tr> </table>			Gulf War I / II Era	Approx. 32,000	- 32 %	Vietnam War Era	Approx. 40,700	- 40.7% (3 <sup>rd</sup> highest nationally)	Korean War Era	Approx. 8,800	- 8.7%	World War II Era	Approx. 4,900	- 4.9%
Gulf War I / II Era	Approx. 32,000	- 32 %												
Vietnam War Era	Approx. 40,700	- 40.7% (3 <sup>rd</sup> highest nationally)												
Korean War Era	Approx. 8,800	- 8.7%												
World War II Era	Approx. 4,900	- 4.9%												

Homeless Veterans – 277 (2015) Source – U.S. Dept. of Housing and Urban Development  
 Veteran Suicides – 50 (2015) Source – Research Memorandum, Legislative Services Division

Federal VA Health Services Facilities / Utilization: Source – Dept. of Veterans Affairs, State Summary

Number of VA Hospitals	1
Number of Community-Based Outpatient Clinics	13
Number of Vet Centers	4
Number of Veterans Receiving Disability Compensation or Pension	22,366
Number of Enrollees in VA Health Care System	50,553

# Montana Veterans Affairs Division Services Offices and Montana State Veterans Cemeteries



Total: 99,646  
Source: VetPop 2014

Note: Numbers in each county are "veteran quantities"

Department of Military Affairs  
Veterans Affairs Program

	Actual FY 2014	Actual FY 2015	Actual FY 2016	Budgeted FY 2017
<b>Expenditures</b>				
<b>Personal Services</b>				
<b>Salaries</b>				
Regular	\$834,394	\$832,826	\$948,692	
Sick Leave	39,970	35,502	44,856	
Vacation	47,768	54,928	60,002	
Holiday	37,000	42,932	42,754	
Differential Pay	-	-	35	
Holidays Worked	738	128	172	
Termination Pay - Sick Leave	538	709	1,929	
Termination Pay - Vacation	5,762	3,537	5,669	
FSLA Comp Time Payout	334	347	1,009	
Compensatory Time Taken	<u>18,531</u>	<u>25,620</u>	<u>24,846</u>	
<b>Total Salaries</b>	985,034	996,528	1,129,965	
<b>Employee Benefits</b>				
FICA	73,219	76,061	83,559	
Retirement - Other	80,519	84,676	94,581	
Group Insurance	215,314	239,440	280,867	
Workers Compensation Insur	6,976	6,329	7,350	
State Unemployment Tax	<u>4,338</u>	<u>5,502</u>	<u>2,828</u>	
<b>Total Employee Benefits</b>	380,367	412,009	469,185	
<b>Total Personal Services</b>	1,365,401	1,408,537	1,599,151	1,685,813
<b>Operating Expenses</b>				
<b>Other Services</b>				
Consult & Prof Services	-	599	-	
Insurance & Bonds-Fixed Costs	9,862	4,651	15,575	
Legal Fees & Court Costs	-	296	-	
Caretaker Services/Other	90	-	-	
Warrant Writing Services	128	108	154	
HRIS Service Fees	4,868	4,929	671	
Workers' Comp Program Fees	499	500	114	
Audit Fees	1,975	2,217	3,469	
Security Protection	22	390	2,112	
SABHRS Administrative Costs	1,260	1,187	1,566	
ITSD Server Hosting Services	107	-	-	
ITSD Application Hosting Servi	29	259	95	
ITSD EMail Services	75	569	660	
ITSD Enterprise Services	<u>1,357</u>	<u>1,303</u>	<u>1,398</u>	
<b>Total Other Services</b>	20,271	17,008	25,813	
<b>Supplies and Materials</b>				
Agricultural	-	202	-	
Printing	163	332	8	
Vehicular	-	-	318	
Books & Reference Materials	2,351	995	666	
Paper/Non-State Provider	664	-	-	

	Actual FY 2014	Actual FY 2015	Actual FY 2016	Budgeted FY 2017
Minor Equipment-Office Equip	1,700	57,368	-	
Office Sup/Minor Equip-NonStat	13,972	23,624	16,103	
Weed Control	-	857	-	
Minor Equip - Comp Hardware	4,614	-	-	
Minor Software.	850	340	17,157	
ITSD Asset Broker	713	703	558	
<b>Total Supplies and Materials</b>	<b>25,027</b>	<b>84,420</b>	<b>34,810</b>	
<b>Communications</b>				
Postage & Mailing	3,607	7,614	2,867	
Messenger Services - D Of A	250	-	689	
Post Office Box Rental	252	258	284	
Advertising - Non Recruiting	338	-	-	
Cellular Phones	2,013	2,056	3,064	
Telephone Equip Crg/Non-D Of A	18,955	25,500	23,167	
Telephone Equip Maintenance	70	-	-	
Internet Services/Non DofA	2,775	2,614	6,101	
Private Cell Phones	840	-	-	
ITSD Network Services	1,490	1,933	1,650	
ITSD Long Distance Services	451	108	44	
<b>Total Communications</b>	<b>31,042</b>	<b>40,082</b>	<b>37,866</b>	
<b>Travel</b>				
In-State Personal Car Mileage	834	916	1,232	
In-State Aircraft Rental	-	5	-	
In-State State Motor Pool	656	1,802	1,514	
In-State No Receipt Lodging	180	24	18	
In-State Meals	1,389	1,196	1,094	
In-State Lodging	4,197	13,999	7,942	
In-State Meals Overnight	2,090	3,997	3,024	
Out-Of-State Personal Car Mlge	302	11	-	
Out-Of-State Commercial Trans	570	785	-	
Out-Of-State Lodging	698	-	-	
Out-Of-State Meals-Overnight	321	246	222	
In-State Pers Car Mile-Trng	65	-	-	
In-State Comm Trans-Training	1,477	-	-	
In-State No Rceipt Lodg Trng	48	-	-	
In-State Lodging-Training	1,964	-	-	
In-State Meals Overnite-Trng	1,620	964	-	
Out-Of-State Pers Car Mil-Trng	-	6	-	
Out-Of-State Com Trans-Trng	2,834	5,228	3,727	
Out-Of-State No Rcpt Lodg Trng	12	-	-	
Out-Of-State Lodging-Training	1,684	1,697	4,815	
Out-Of-State Meals Ovrnit-Trng	721	346	963	
Non-Employee Travel - Mileage	4,180	4,582	4,328	
Non-Employee Travel - Meals	360	392	335	
Non-Employee In-State Lodging	920	659	839	
<b>Total Travel</b>	<b>27,122</b>	<b>36,855</b>	<b>30,054</b>	



	Actual FY 2014	Actual FY 2015	Actual FY 2016	Budgeted FY 2017
<b>Rent</b>				
Office Equipment	806	1,083	-	
Motor Pool Leased Vehicles	27,041	33,007	28,842	
Meeting Rooms	100	-	-	
Rent/Non-State Bldgs.	21,223	23,867	21,015	
<b>Total Rent</b>	<b>49,170</b>	<b>57,957</b>	<b>49,857</b>	
<b>Utilities</b>				
Water & Sewage	-	-	41	
Garbage & Trash Removal	25	35	-	
<b>Total Utilities</b>	<b>25</b>	<b>35</b>	<b>41</b>	
<b>Repair &amp; Maintenance</b>				
Buildings & Grounds	-	-	3,385	
Office Equipment	147	-	85	
Vehicles - Passenger	-	175	-	
Tires & Tubes	110	-	-	
Computer Hardware Maintenance	-	-	(764)	
Maintenance Contracts	5,982	3,320	95	
<b>Total Repair and Maintenance</b>	<b>6,239</b>	<b>3,495</b>	<b>2,801</b>	
<b>Other Expenses</b>				
Dues	800	1,600		
Education/Training Costs	396	453	343	
DoA - Pro Develop Center	-	-	106	
Rewards	117	98	-	
Meetings/Conference Costs	539	591	250	
Licenses & Permits	-	-	3,119	
Charitable Contributions	4,200	9,150	5,000	
Parking Fees	234	157	1,318	
Procurement Card Default	10	573	(569)	
<b>Total Other Expenses</b>	<b>6,296</b>	<b>12,621</b>	<b>9,567</b>	
<b>Total Operating Expenses</b>	<b>165,191</b>	<b>252,473</b>	<b>190,809</b>	<b>149,251</b>
<b>Grants</b>				
<b>Grants</b>				
To Professional Societies	180,000	141,000	-	
<b>Total Grants</b>	<b>180,000</b>	<b>141,000</b>	<b>-</b>	
<b>Total Expenditures</b>	<b><u>\$1,710,592</u></b>	<b><u>\$1,802,010</u></b>	<b><u>\$1,789,959</u></b>	<b><u>\$1,835,064</u></b>
<b>Funding</b>				
<b>Funding</b>				
General Fund	\$1,096,410	\$1,096,831	\$1,069,937	\$1,114,724
State Special Revenues	614,182	705,179	720,023	720,340
<b>Total Funding</b>	<b><u>\$1,710,592</u></b>	<b><u>\$1,802,010</u></b>	<b><u>\$1,789,959</u></b>	<b><u>\$1,835,064</u></b>