

# Montana's Intergenerational Transfer of Wealth

Revenue & Transportation Interim Committee

April 26, 2012

Linda Reed  
President/CEO



# Montana Community Foundations



- ★ Foundations affiliated with the Montana Community Foundation
- ★ Non-affiliated community foundations

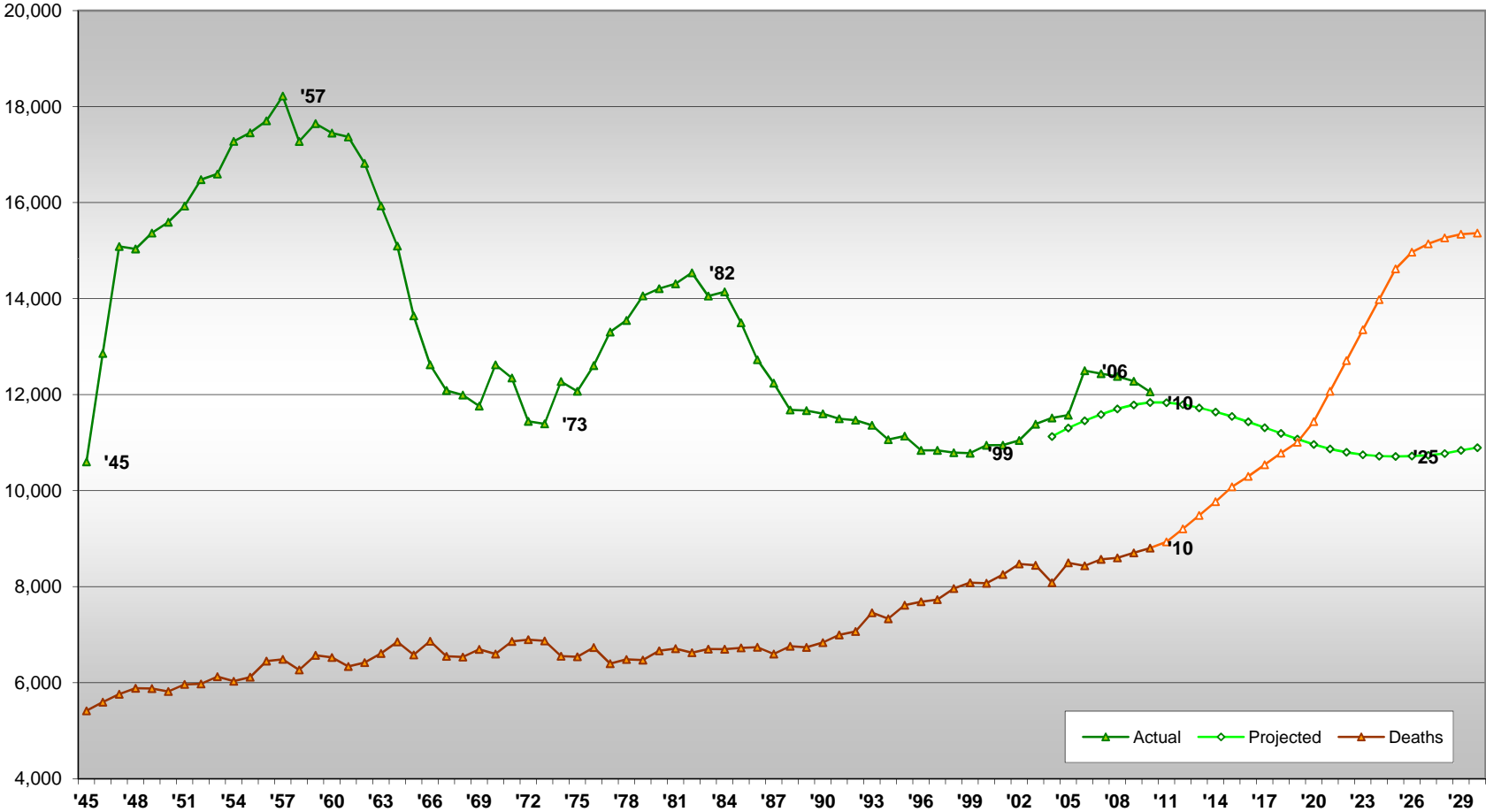


**\$307 Million  
Every Year**



# Natural Population Change

Annual Births in Montana - Actual (1945-2010) and Projected (2004-2030)

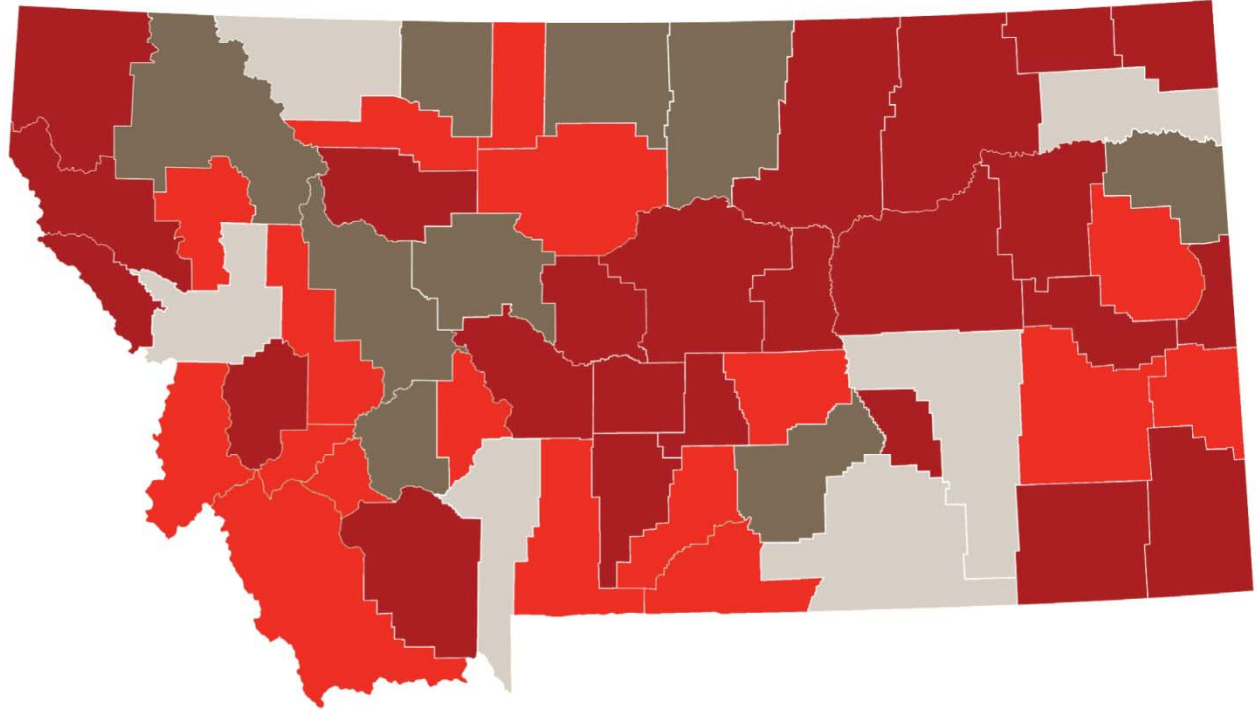


Source: Actual (Montana Vital Statistics, 2011) and Projected (births, U.S. Census Bureau, March, '05; deaths: Swanson)



# 2010 Age by County

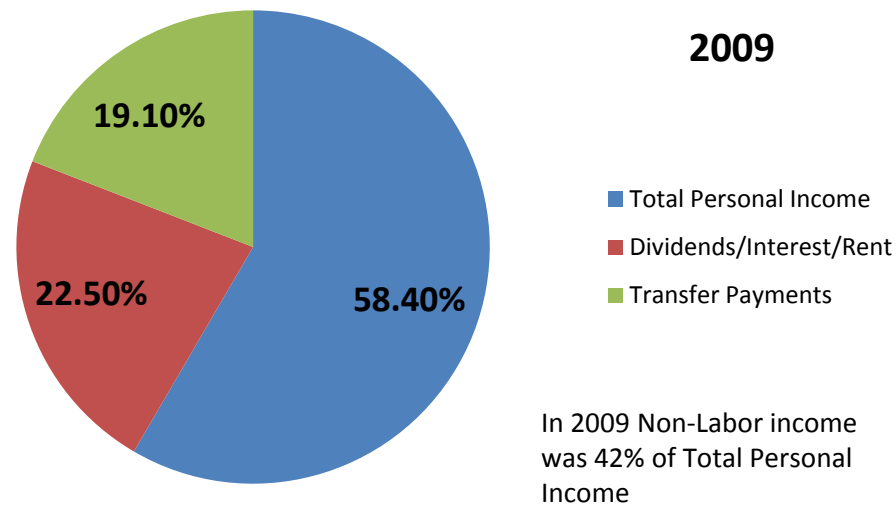
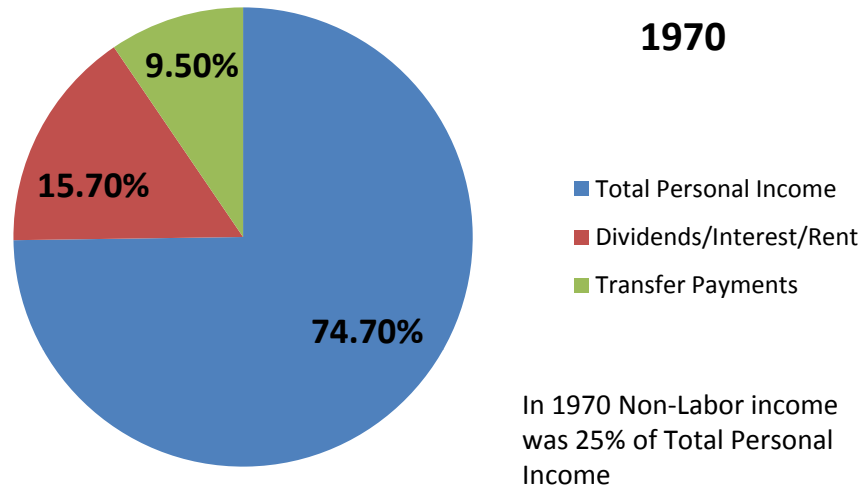
Percent of Population 65 and Older, 2010



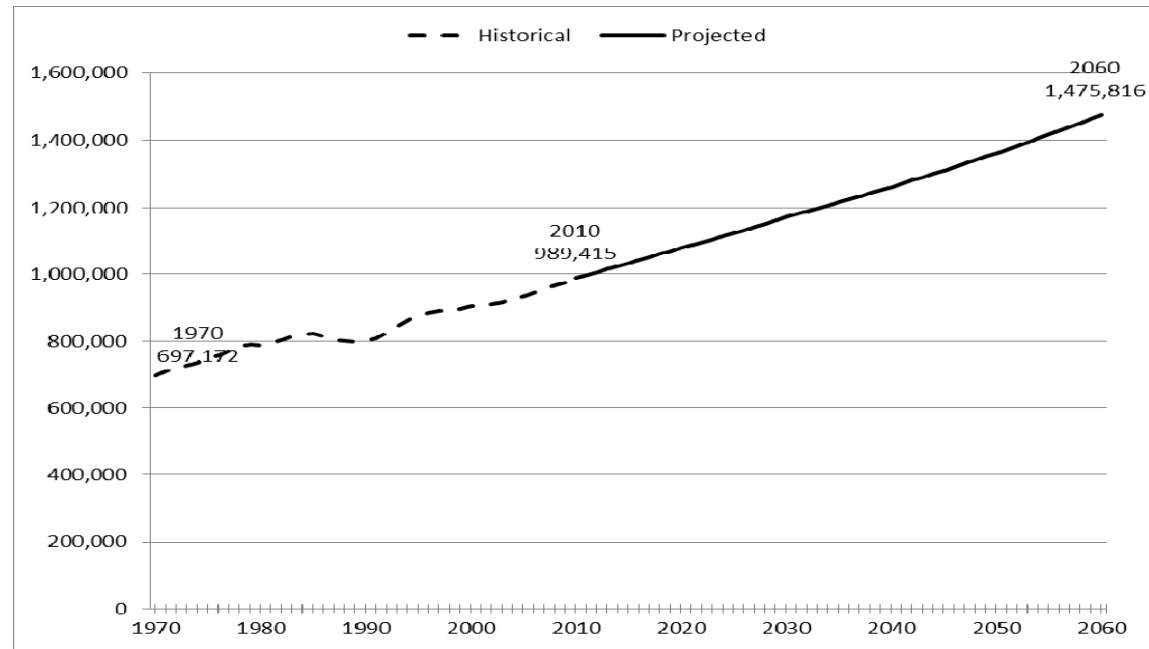
- 20 % and more
- 16 to 20%
- 12 to 16%
- 12% or less



# Economic Drivers of Household Income



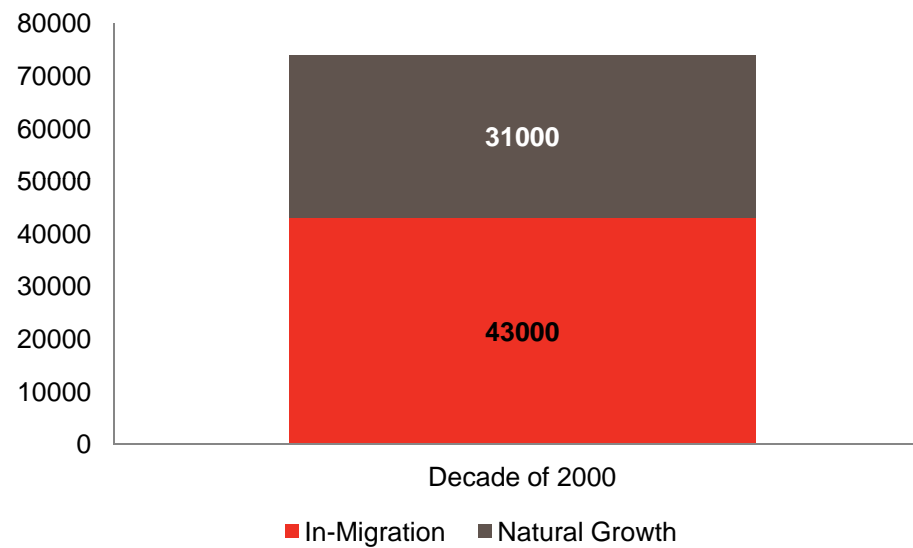
# Population Estimate



Source: *Historical Census, Census 2010 and RUPRI Center for Rural Entrepreneurship*  
Graph 2 breaks down population growth by regions.



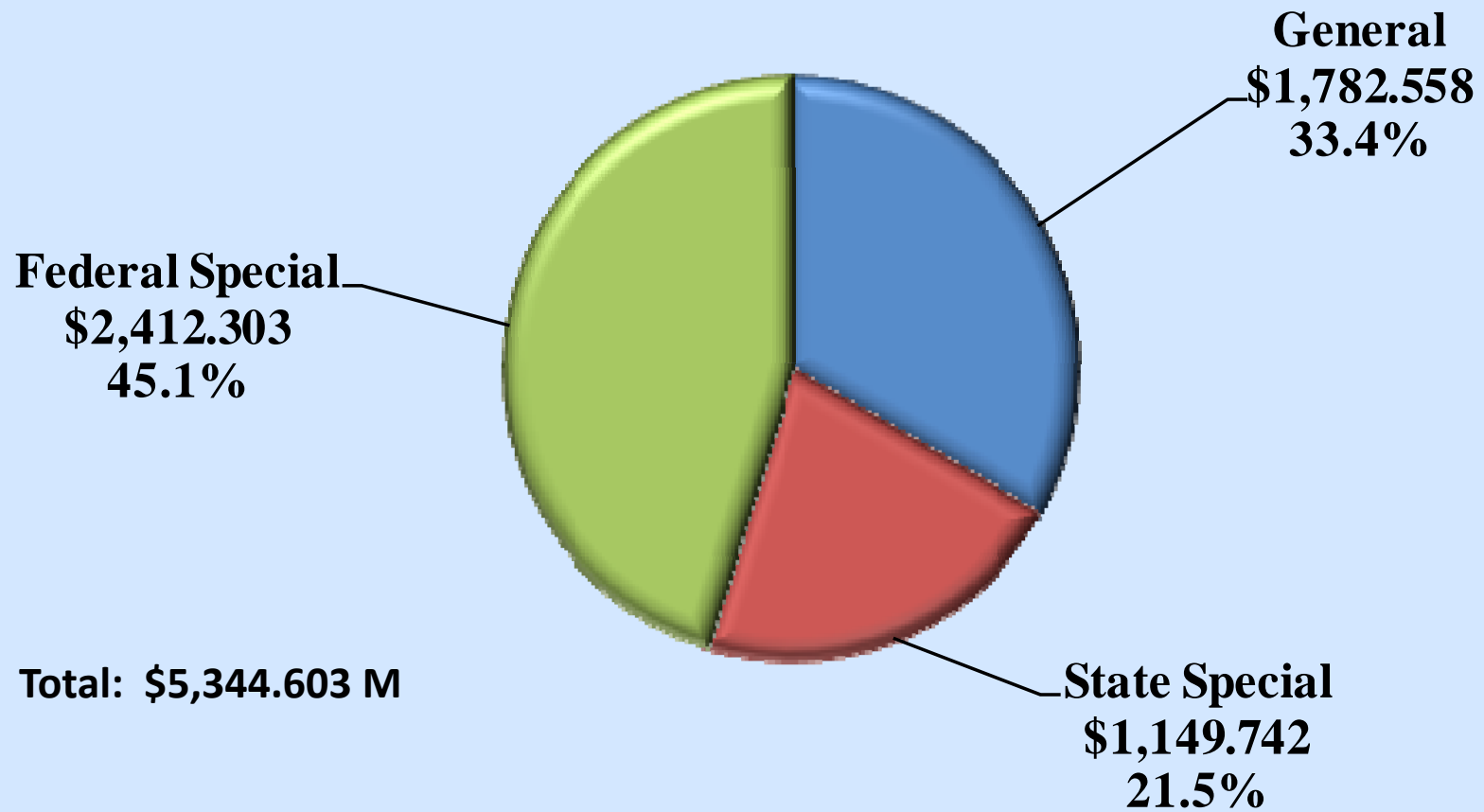
# Population Growth Decade of 2000





# State Government Revenues By Fund - FY 2011

Figures in Millions



# Town of Brady, Montana – Wastewater Lagoon

Treasure State Endowment Program (TSEP)	\$770,000
Community Development Block Grant (CDBG)	\$322,000
MT Dept. of Natural Resources	\$115,000
USDA Rural Development Loan	\$439,000
USDA Rural Development Grant	\$1,131,500
<b>Project Total:</b>	<b>\$2,771,500</b>

Cost per month per user as funded:

**\$37**

Cost per month per user with RD/CDBG at 75%:

**\$53**

Cost per month per user with RD/CDBG at 50%:

**\$70**

Cost per month per user with RD/CDBG at 0%:

**\$102.50**

