

WELCOME



DNRC Mission



To help ensure that Montana's land and water resources provide benefits for present and future generations



DNRC includes five divisions

- Director's Office
- Conservation and Resource Development
- Forestry
- Trust Land Management Division
- Water Resources

Administratively Attached to DNRC

- Board of Oil and Gas Conservation
- Reserved Water Rights Compact Commission



DNRC Field Operations

DNRC has over 500 employees located in 40 offices in 28 communities throughout Montana

DNRC Field Operations

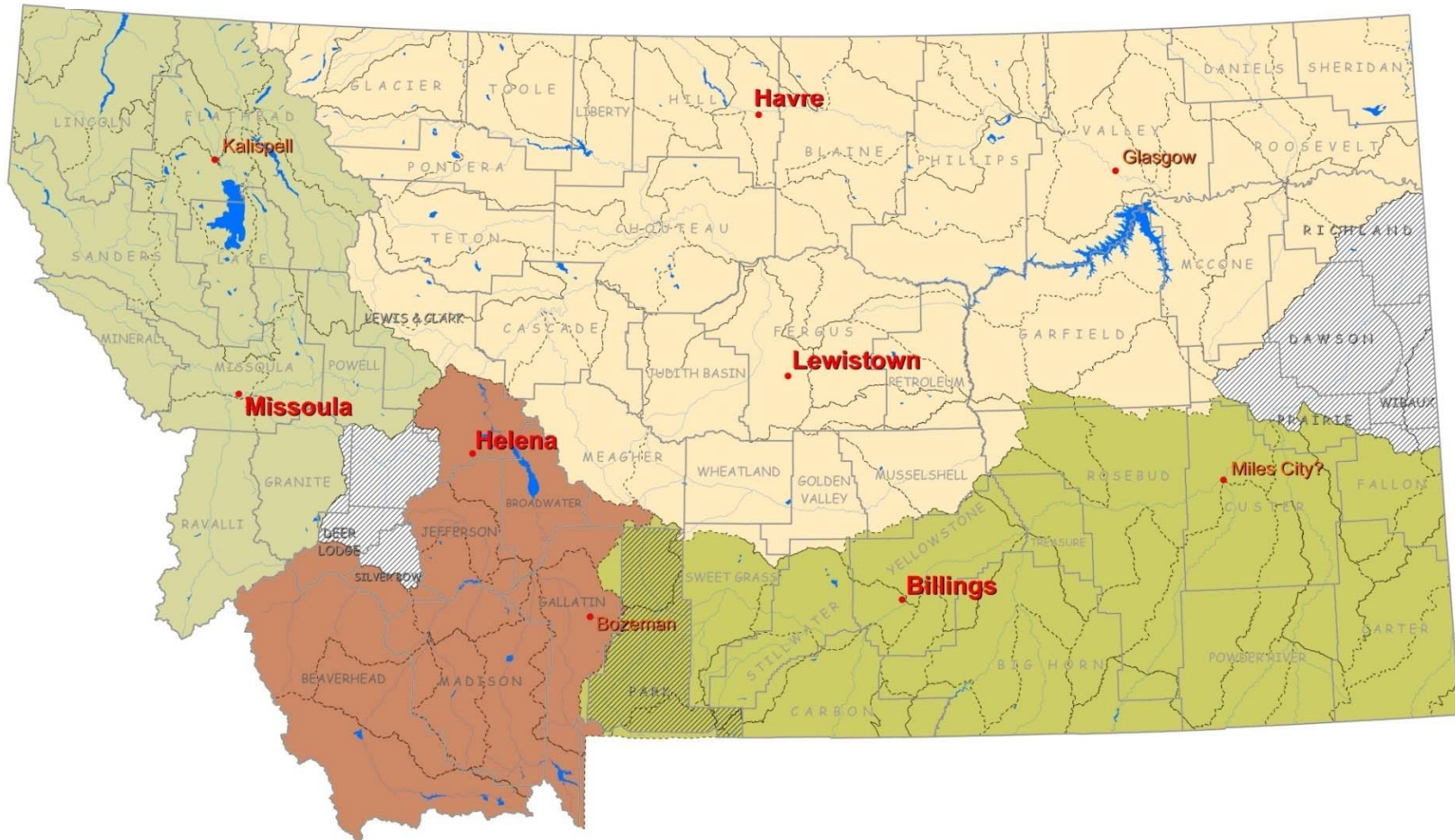
– Forestry and Trust Land Offices



- ▲ Field Office
- 🔥 Fire Dispatch
- ◆ Headquarters
- ★ Land Office
- Multiple Offices
- Unit Office

NWLO	SWLO	CLO	SLO	NELO	ELO
Northwest Land Office	Southwestern Land Office	Central Land Office	Southern Land Office	Northeast Land Office	Eastern Land Office

Water Resources Division regional office boundaries



- DNRC Office Locations
- Counties
- USGS Subbasins
- Regional Office Boundaries**
- BILLINGS/Miles City?
- HELENA/Bozeman
- LEWISTOWN/HAVRE/Glasgow

Director's Office Services

- Fiscal management
- Information Services
 - IT services
 - Publications
 - Public Information
 - Video conferencing
 - Geographic Information Systems
- Legal services
- Human Resources and training
- Procurement & Contracting
- Trust Revenue Collection & Distribution





Conservation and Resource Development Division





CARDD bureaus

- Conservation Districts
- Resource Development
- Loans & Financial Management

Two advisory groups work with CARDD

- Resource Conservation Council
- Rangeland Resources Committee

Conservation Districts

2010 Montana Youth Range Camp

In this democracy, national action to conserve soil must be generated by these millions of land users. If they, no active and willing participants in such a movement, it will exhaust, otherwise it will fail.
— Hugh Hammond Bennett (1930),
"The Father of Conservation"

THE 2010 MONTANA YOUTH RANGE CAMP was held at the Livestock Showcase Camp south of Elliston. Sponsored by the Deer Lodge Valley Conservation District, twenty-five youth were able to attend camp and enjoy the setting on the Little Blackfoot River. Campers learned about rangelands on a local ranch from range professionals from the Natural Resources Conservation Service and Montana Department of Natural Resources and Conservation. Campers also got a visit from wildlife specialists Vince Yarnane and Janis Jenkel.

Deer Lodge Valley Conservation District

Missoula Conservation District Activities

In this democracy, national action to conserve soil must be generated by these millions of land users. If they, no active and willing participants in such a movement, it will exhaust, otherwise it will fail.
— Hugh Hammond Bennett (1930),
"The Father of Conservation"

Deer Lodge Valley Conservation District

Missouri River Streambank Restoration Project

In this democracy, national action to conserve soil must be generated by these millions of land users. If they, no active and willing participants in such a movement, it will exhaust, otherwise it will fail.
— Hugh Hammond Bennett (1930),
"The Father of Conservation"

PPL Montana Awarded a Missouri River Fisheries TAC Grant to the Cascade County Conservation District to implement a streambank restoration project on the banks of the Missouri River in Great Falls.

The Mandan Lake Country Club approved the Cascade County Conservation District about getting a permit to riprap a bank on the Missouri River to prevent erosion and was encouraged to consider a bioengineering approach. The Cascade County Conservation District, through a PPL Montana grant, worked with the country club to implement a project to demonstrate a bioengineering method that naturally restores the bank by using native vegetation rather than rock riprap to protect the bank from erosion.

The project involved reshaping the bank and planting over 17,000 willow in what is called an encapsulated life. In addition, approximately 300 native shrubs and trees were planted adjacent to the new stream. This planting restored the upland component of the Missouri River riparian vegetative community as well as providing a diverse root mass for long-term bank and flood protection in the event of an extraordinary hydrologic event.

The conservation district cooperated with Jo Christensen of the Bureau of Land Management; PPL Montana, the Mandan Lake Country Club, and April Singer, a science teacher at Great Falls High School, as well as other state and local agencies to carry out the project.

Cascade County Conservation District





Resource Development Bureau



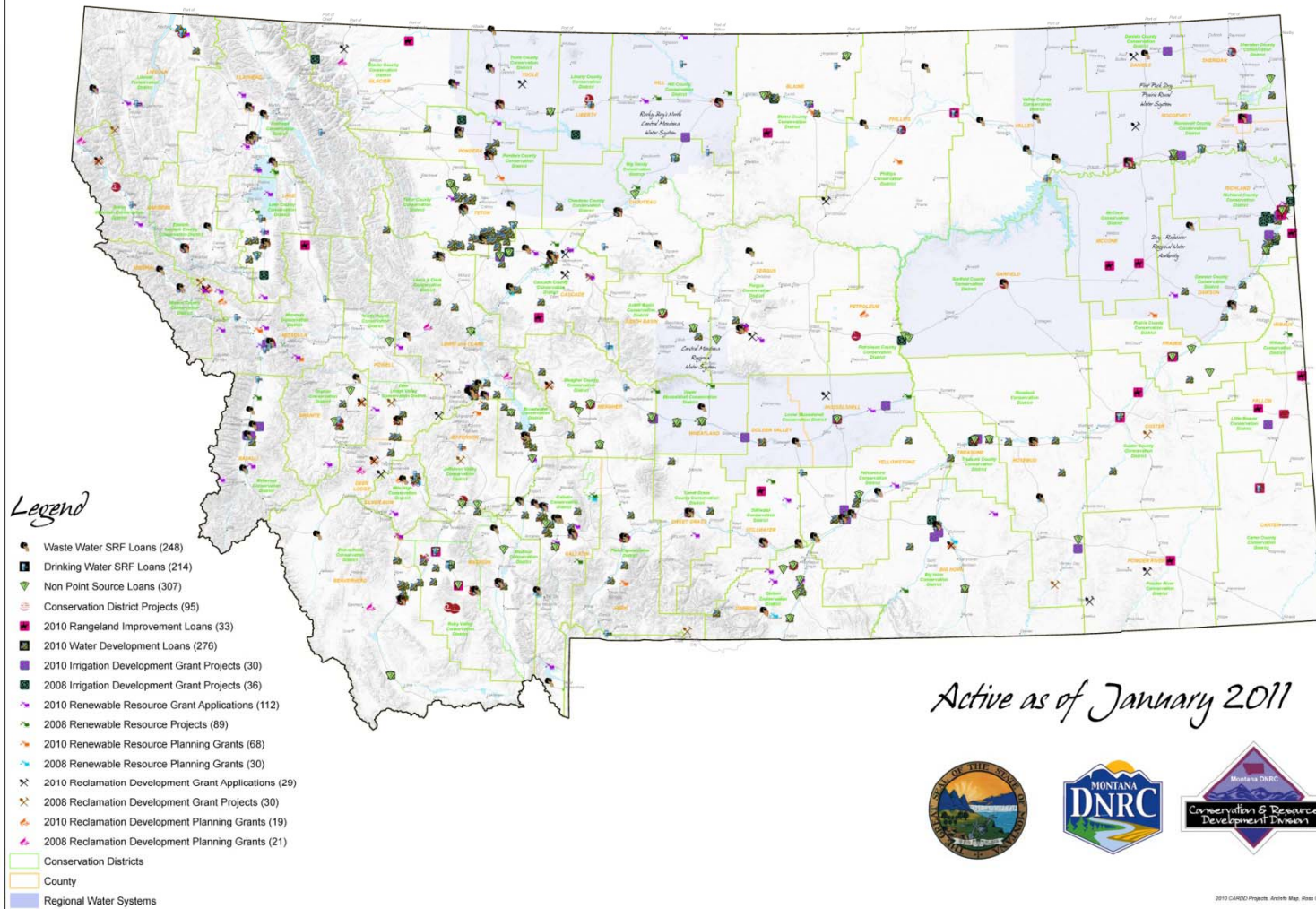






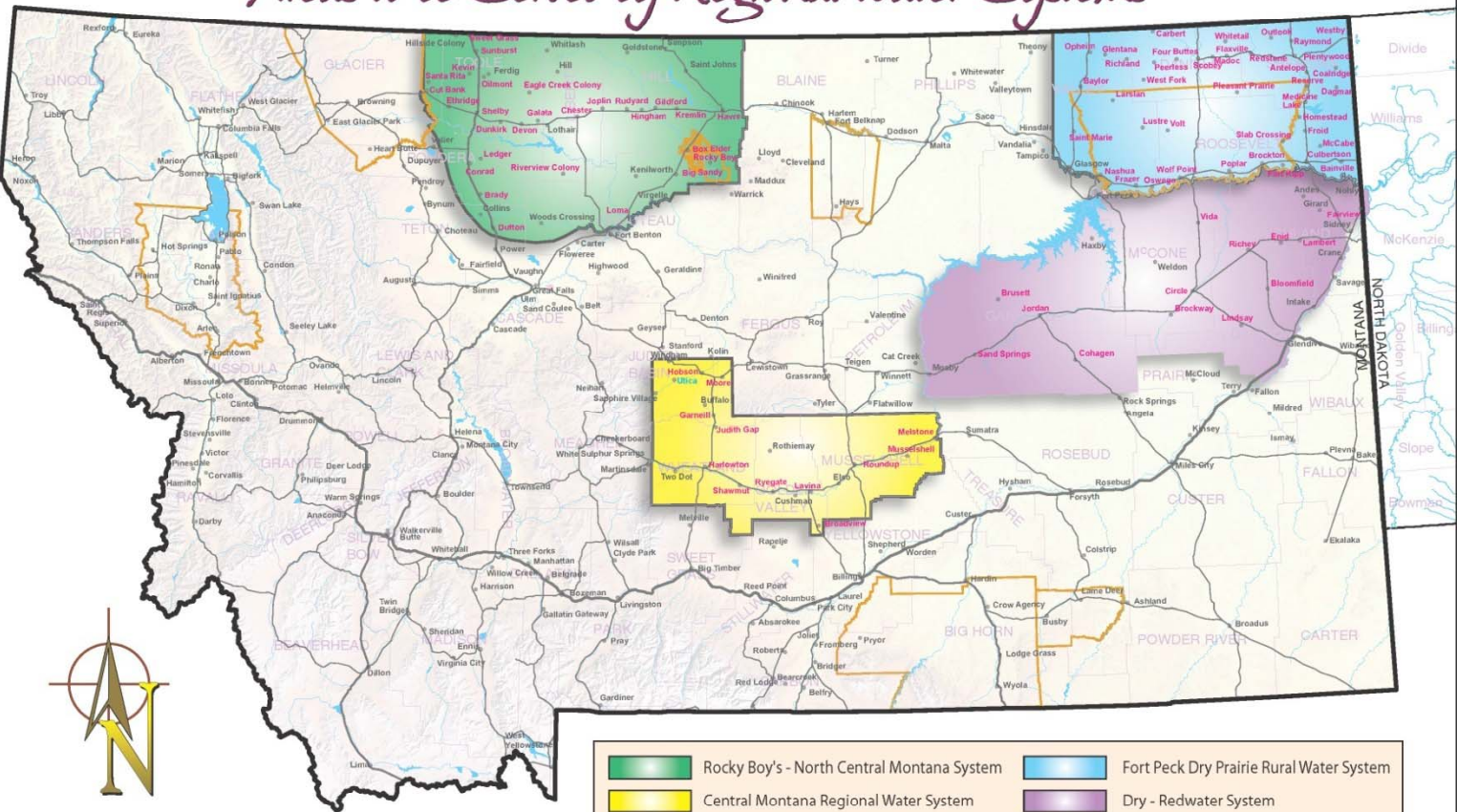
Active Grant & Loan Projects

Conservation and Resource Development Division Projects



Regional Water Projects

Areas to be Served by Regional Water Systems



Updated 1/2011
Russ Campbell, DMRC



Loan & Financial Mgt. Bureau

- State Water Pollution Control Revolving Fund
- State Drinking Water Revolving Fund



Forestry Division

“Ensure sustainability of Montana forests, rural lands, and communities through cooperative wildland fire protection, sound forest management practices, and by promoting a viable forest-based economy.”



Forestry Division

Forestry Assistance
Business Management
Forest Policy & Planning
Fire and Aviation Management



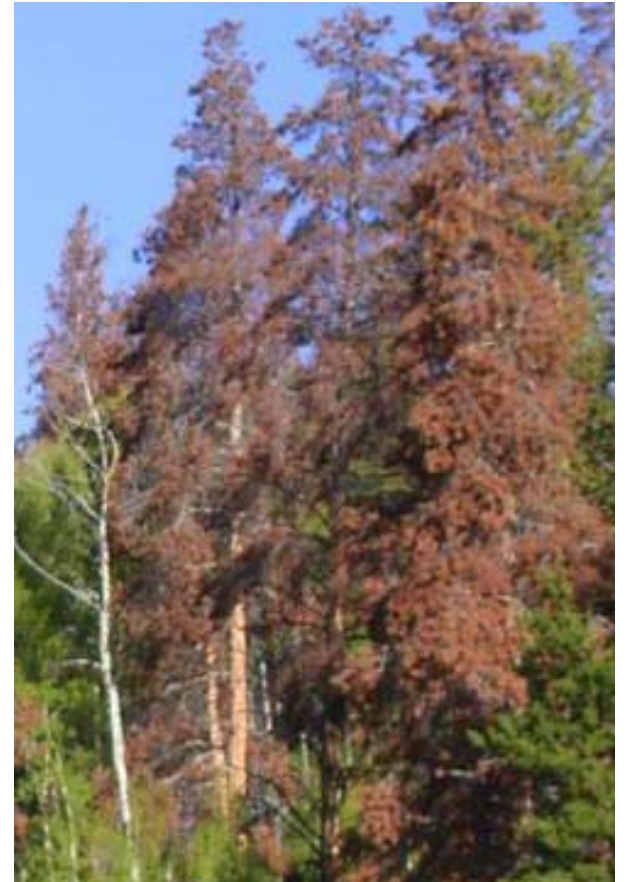
Forestry Assistance



Urban & Community Forestry

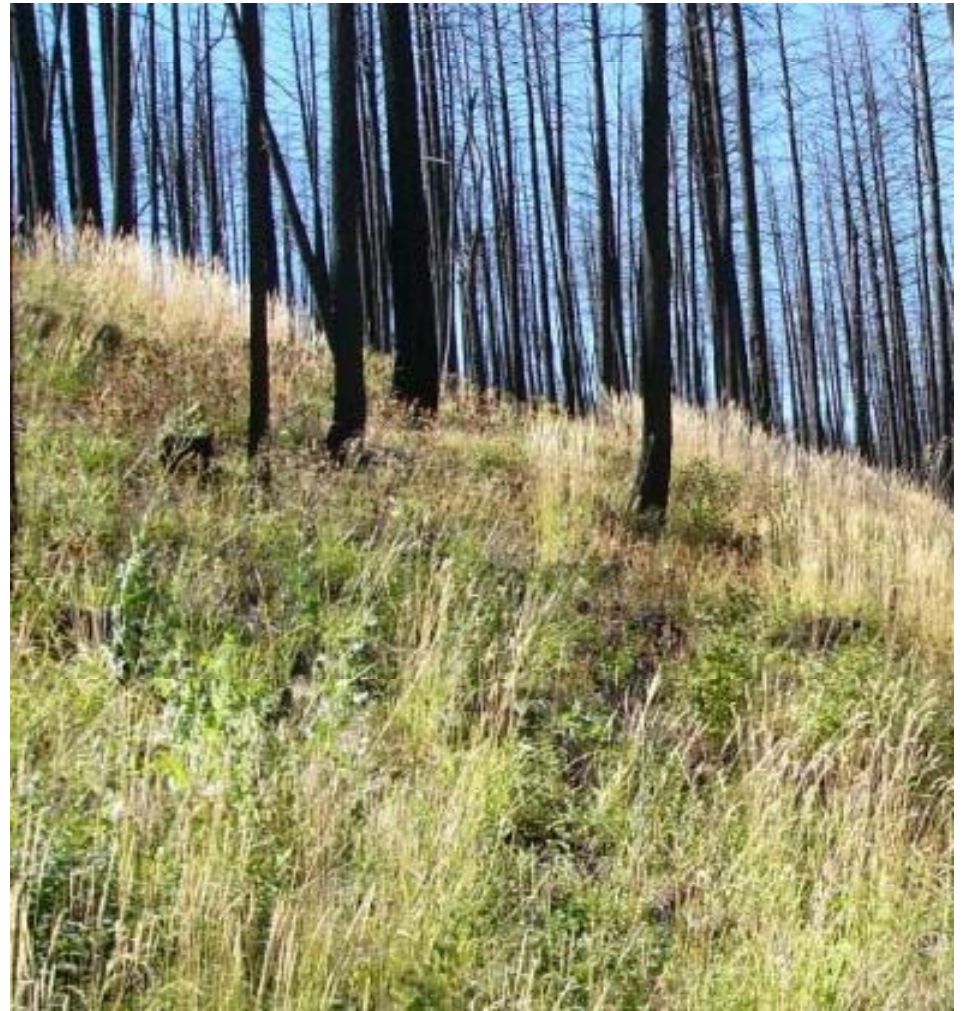


Conservation Seedling Nursery



Forest Health

Post-fire rehabilitation



Business Management

- Fire suppression cost recovery
- Facilities management
- Grant management
- Administrative support



Policy and Planning

- Federal forest policy and planning
- Strategic planning for Forestry, Trust Lands divisions



Fire and Aviation Management



Fire Suppression, Aviation, Training, Prevention, GIS, Equipment Development, and Communications



Board of Oil and Gas Conservation Division

- Promotes Conservation
- Prevents Waste
- Protects Correlative Rights of All Owners

Underground Injection Control Program

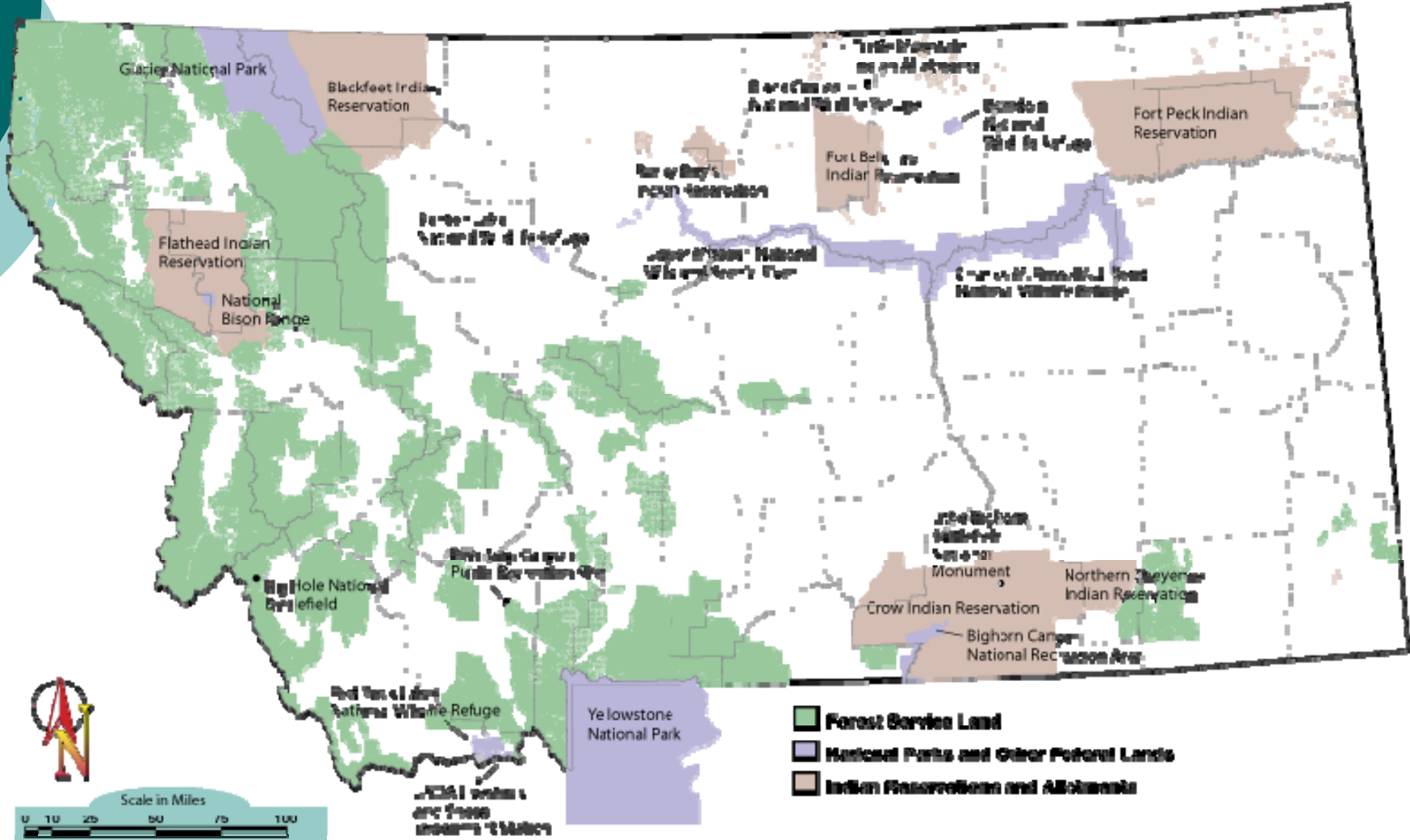




Reserved Water Rights Compact Commission

*Negotiates Reserved Water Rights
with Montana Indian Tribes and
Federal Government Agencies*

Federal reserves in Montana



Staff Support Services

- Historical and Legal Research
- Research, Analysis, and Mapping of Soils, Irrigation and Hydrology





RWRCC – Accomplishments

- **Water Right Compacts Negotiated & Approved to date:**

- **Six of Montana's Seven Indian Reservations**

- Fort Peck, Northern Cheyenne, Rocky Boy's,
- Crow, Fort Belknap, & Blackfeet

- **Ten Federal Reservations**

- National Parks, National Monuments, National Wildlife Refuges, National Recreation Areas, National Forest Reserves, and Research & Experiment Stations



RWRCC – Sunset Pending

- RWRCC Sunsets July 1, 2013
- Staff Transitions to Water Resources Division for Compact Implementation Tasks
- **Compacts Remaining to be Negotiated:**
 - **Confederated Salish & Kootenai Tribes of the Flathead Reservation**
 - **Charles M. Russell National Wildlife Refuge**
 - **Upper Missouri River Breaks National Monument**
 - **Turtle Mountain Band of Chippewa Indians**

Trust Land Management Division

“Manage the State Trust Lands to produce revenues for the trust beneficiaries while considering environmental factors and protecting the future income-generating capacity of the land.”



Trust Land Mgt. bureaus

- Agriculture and Grazing
- Forest Management
- Minerals Management
- Real Estate Management



Trust Revenues FY 2010

<u>Beneficiaries</u>	Net Distributable <u>Revenue</u>	Net Nondistributable <u>Revenue</u>
Common Schools*	\$149,221,993	\$10,449,462
University of Montana	198,790	760
MSU - Morrill Grant	604,359	47,813
MSU - Second Grant	846,541	22,636
Montana Tech	889,274	45,166
State Normal School	371,504	43,594
School for the Deaf & Blind	264,973	41,236
State Reform School (Pine Hills)	263,150	94,387
Veterans Home	11,048	0
Public Buildings	1,635,457	0
MT Developmental Center	2,233	0
MT State Hospital	<u>2,233</u>	<u>0</u>
Total	\$154,311,555	\$10,745,054

* Includes School Facility distribution

Trust Land activities generated approximately \$133.3 million of state's share of public school funding – about \$940 per pupil in FY 2010.



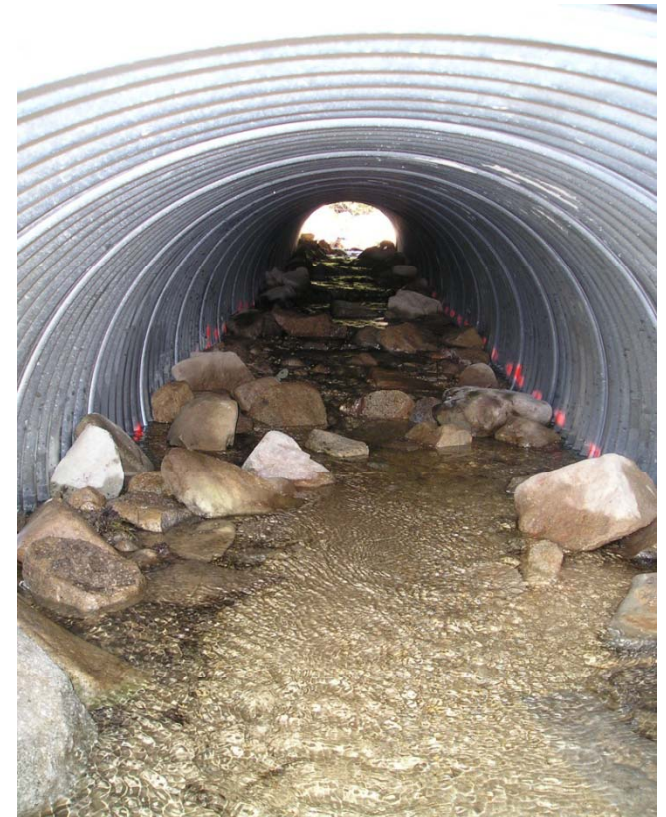
Agriculture and Grazing Management

- FY 10 revenues of \$18 million



Forest Management

- Timber revenues of \$8 million and \$1.2 million in forest improvement fees, FY 2010



Minerals Management

- FY 2010 revenues of \$118 million



Real Estate Management



- FY 2010 revenues of \$10.9 million

Water Resources Division

"Promotes and coordinates the wise use and conservation of Montana's water resources for current and future generations."

State Water Projects Bureau



Water Adjudication Bureau



Water Right
January 1, 1900,
Notice of Water Right
We the undersigned claim the water running through this ditch
and flume to the extent of two thousand inches for agricultural
purposes to be conveyed through this ditch and flume from this
point to our respective farms, this ditch is taken out of the
North side of Lewis about 6 miles from the mouth where copy
of this is posted
Witness
C. A. Simpson
A. L. Lampson
J. J. Lelihan
A. L. Brown
J. M. Brown
Sam. M. Newby
Filed for record Jan 12 1900 at 9:35 A.M. request of J. J. Lelihan
Recorded Jan 12 1900
Fred Pfeiffer
Auditor



Water Management Bureau

- Watershed Management
- Protection of Montana's Water
- Protection and Use of Groundwater
- Water Resource Education
- Improvement of Statewide Water Management
- Drought Mitigation and Management

Water Operations Bureau



Water Rights Bureau

- Water rights records, database
- New water appropriations
- Water Right appropriation changes





AUG 8 2007